

# Violin 2

# The Light

for Two Narrators and Chamber Orchestra

"As Moses lifted up the serpent in the wilderness, even so was Jesus lifted up, in order that every one who trusts in Him should not perish, but have eternal life." -John 3:15

Mark Brandon Feezell

## Scene 1: The Light

Violin 2\*  $\text{♩} = 84$

3

6

8 **A**

10

*ppp* *p* *mp* **3**

\* The violins and violas should be 2 per part, for a total of 8 violins, 6 violas, 3 cellos, and 1 double bass  
Composed 2003 by Mark Feezell / DrFeezell.com. Dedicated to the Public Domain (CC0 1.0) 2024.  
No use restrictions whatsoever. Visit DrFeezell.com for the latest editions and updates.

Violin 2

15

mf

Detailed description: This system contains measures 15 and 16. Measure 15 starts with a whole rest, followed by a quarter note G4, a quarter note A4, and a quarter note B4. Measure 16 begins with a quarter note C5, followed by a quarter note B4, a quarter note A4, and a quarter note G4. The key signature has three sharps (F#, C#, G#). Dynamics include a *mf* marking with a hairpin.

**B**

17

f

Detailed description: This system contains measures 17, 18, and 19. Measure 17 starts with a quarter note G4, followed by quarter notes A4, B4, and C5. Measure 18 contains quarter notes B4, A4, G4, and F#4. Measure 19 contains quarter notes E4, D4, C4, and B3. The key signature has three sharps. Dynamics include a *f* marking with a hairpin.

20

Detailed description: This system contains measures 20, 21, and 22. Measure 20 starts with a whole rest, followed by a quarter note G4, a quarter note A4, and a quarter note B4. Measure 21 contains quarter notes C5, B4, A4, and G4. Measure 22 contains quarter notes F#4, E4, D4, and C4. The key signature has three sharps. Dynamics include hairpins.

23

Detailed description: This system contains measures 23, 24, and 25. Measure 23 starts with a quarter note G4, followed by quarter notes A4, B4, and C5. Measure 24 contains quarter notes B4, A4, G4, and F#4. Measure 25 contains quarter notes E4, D4, C4, and B3. The key signature has three sharps. Dynamics include hairpins.

26

**C**

> mf f mf mp

6/8 12/8

Detailed description: This system contains measures 26, 27, and 28. Measure 26 starts with a quarter note G4, followed by quarter notes A4, B4, and C5. Measure 27 contains quarter notes B4, A4, G4, and F#4. Measure 28 contains quarter notes E4, D4, C4, and B3. The key signature has three sharps. Dynamics include > *mf*, *f*, *mf*, and *mp* markings with hairpins. The system ends with a double bar line and two time signatures: 6/8 and 12/8.

Violin 2

30 *mp*

34 *f* **D** *rit.*

37 *mp*

40 *mp* **E** *mf* ♩. = 68

43 *mf* Speak with a low, even, foreboding voice

46 emp - ty, and dark - ness was on the face of the deep,

48 **F** *secco pizz.* *mf* 2

Cue from Moses:  
"And the Spirit  
of God moved  
over the waters."

Violin 2

53 Cue from Moses (don't speak) **G** ♩ = 84 *subito* arco

And God said, "Let there be light," *mf*

55

*f* *mf*

58

*f* *mf*

61

*f* *mf* *mp*

Scene 2: The Judgment

67 **H** ♩ = 64 **I**

*mf* *f*

82 *accel.* ♩ = 128 **J** ♩ = 148 *Hypnotically*

*f* *sempre*

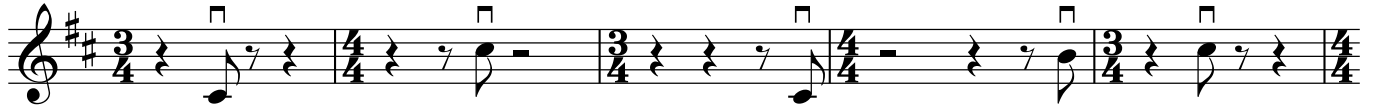
Violin 2

87

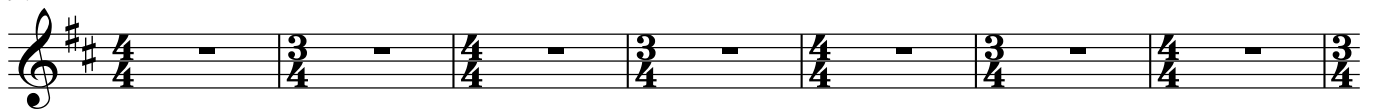


**K**

92



97



104



**L**

111

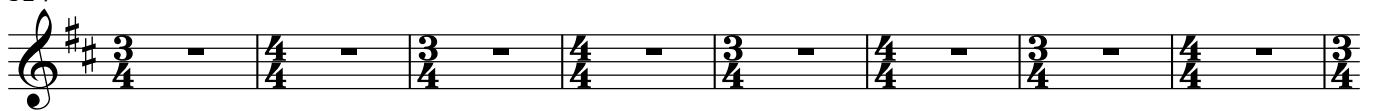


**M**

117



124



132



Violin 2

Moses:  
"fruit"

140 **N**

145

151 **O**  $\text{♩} = \text{♩} = 148 \text{ accel.}$   $\text{♩} = \text{♩} = 64$   
*p*  $\text{-----}$  *f*

154

155

156

157

158

159 **P**  
*mp*  $\text{-----}$  *p*

Violin 2

161 **6** pizz. *mp* *p*

Scene 3: The Serpent in the Wilderness

**Q** ♩ = 50

arco

169 *pp* sempre

173 *mf*

175 *poco rit.* **R** ♩ = 68  
*f* *ff*

186 **S** *mp* *mp* **8**

Violin 2

198 *poco accel.* **T**  $\text{♩} = 78$   
Clar. *p* cue  
Play  
*mp*

204 **U**  
*p* *mf*

210 **V** Vln 4 cue Play  
*mf* *mp* *mf*

216  
*mf* *mf*

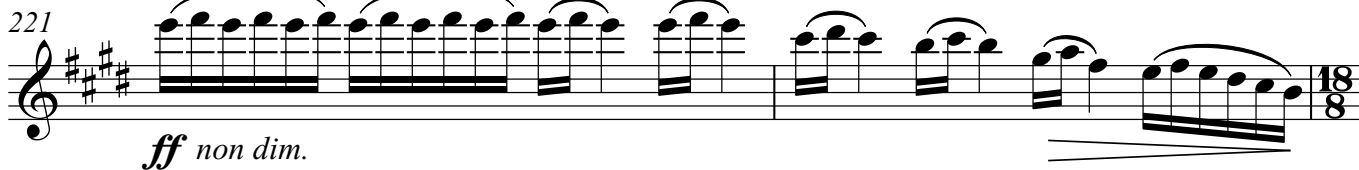
219 *accel.*  $\text{♩} = \text{♩} = 52$   
*f* *attacca*

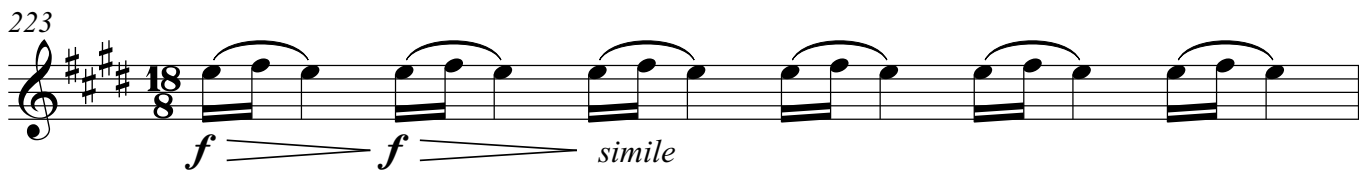


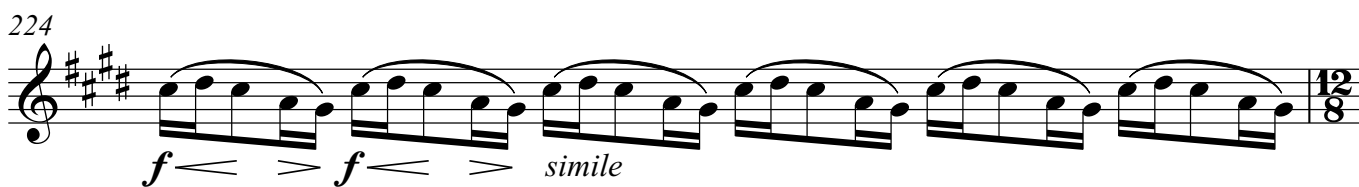
Violin 2

Scene 4: New Jerusalem

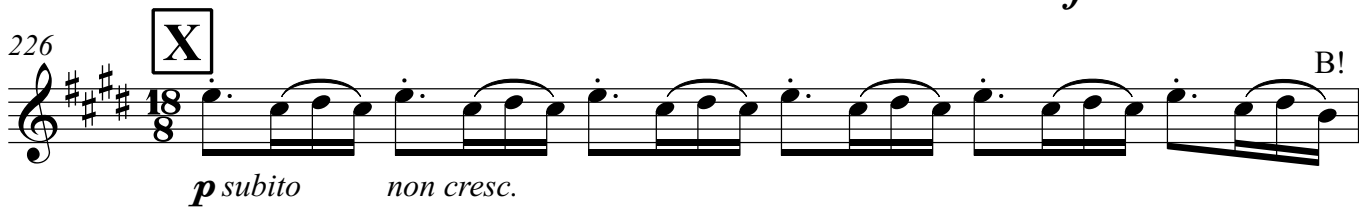
**W** ♩. = ♩. = 62

221   
*ff non dim.*

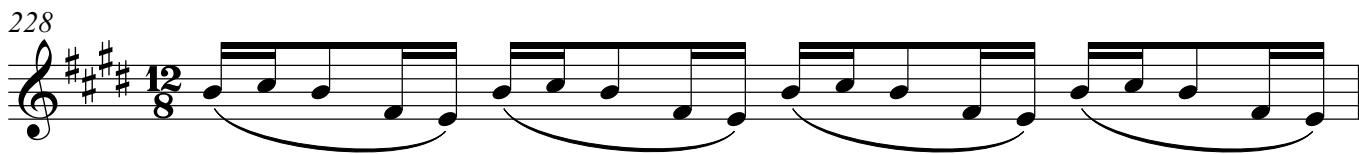
223   
*f > f < simile*

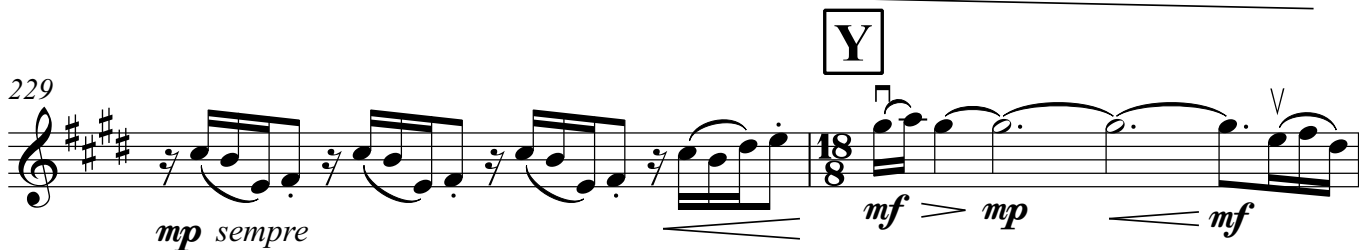
224   
*f < > f < > simile*

225   
*f < > f < > f < > f < >*

226   
**X** *p subito non cresc.* B!

227 

228 

229   
**Y** *mp sempre* *mf > mp < mf*

Violin 2

231

> *mp*  
*mf subito*

233

*f*

234

*mf*

235

*mp*

236

*p*

244

*pp* *p* *mp* *pp sempre*

Violin 2

**BB**

252

niente *p* sempre

256

*mp*

258 **CC** ♩ = ♩ = 62

*f* *f*

260

*f* *ff* *f* *ff*

262 **DD**

*p*

264

*p*

265

*mp* *mp* *p* *mp*

Violin 2

268 **EE**

*p* *mp* *mf*

John cue:  
"Tree of Life."

270

*f* *mf* *f*

273

*ff*

276 **FF**

*f* *mf*

278

*mp* *mp* *p*

Violin 2

280

*mp* *p* *pp*

GG HH

282

*ppp* *ppp*

$\text{♩} = 62$   
15

$\text{♩} = 54$   
sul D

Note: Vln 2 differs from Vln 1 - do not listen to them.

300

*pp* *p* *mp*

sul A normale

305

*p* *mp* *mf* *ff*

Desperately

*non cresc.* *sudden crescendo*

II

310

*fff* *ff* *f* *mf*

sul ponticello

315

*mp* *p* *pp* *ppp* niente

Scene 5. The Beginning

Violin 2

322 **JJ** ♩ = 62 **KK** normale  
6 7  
*mp*

339 **LL**  
*mf*

344 **MM**  
*f*

350  
3

354

356 (G sul A)  
*ff*

Violin 2

360 **NN**

*p* *pp*

365 **OO**

sub. ♩ = 86

*p subito* *mp*

367

*mf* *f* *mf*

370

*mf* *f* *mf*

374

*poco rit.*

*mf* *f* *mf* *mp*

378 **PP**

*a tempo*

*mp*

382

♩ = 86

*mf* *mp*

Violin 2

386

*mp*

*poco accel.*

389

*mf*

**QQ**

$\text{♩} = \text{♩} = 62$

390

*f non dim.*

*mf*

392

*mf*

*mp*

*mf*

394

*mp sub.*

*mf*

396

*mp subito*

*mf*

*f*

**RR**



Violin 2

399

*pp* *pp* *pp*

401

*pp* *pp* *p*

403

*mp* *ff* *espressivo*

406

*f*

409

*ff* *fff*

Violin 2

412 **TT**

*mp*

414

*mp* *mp* *mp*

416 **UU**

*mf*

417

*f* *ff*

420

*ffp* *fff*