

Viola (Tenor)

# A Mighty Fortress is Our God

Original key: Concert C major

Martin Luther (1483-1546), arr. Mark Feezell

♩ = 92

1



Viola (Tenor)

# Blessed Assurance

Original key: Concert D major

Phoebe Knapp (1839-1908), arr. Mark Feezell

♩ = 104



5



## REFRAIN



12



Viola (Tenor)

# Come, Thou Fount of Every Blessing

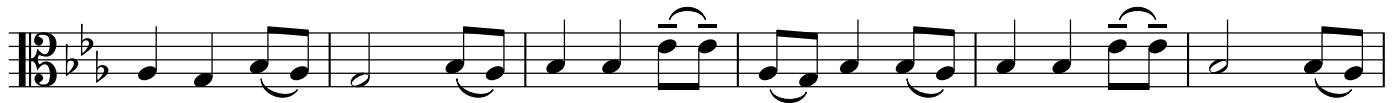
Original key: Concert E♭ major

John Wyeth (1770-1858), arr. Mark Feezell

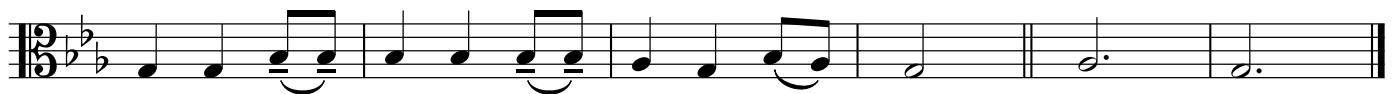
♩ = 92



7



13



Viola (Tenor)

# Crown Him with Many Crowns

Original key: Concert E major

George J. Elvey (1816-1893), arr. Mark Feezell

♩ = 104



7



13





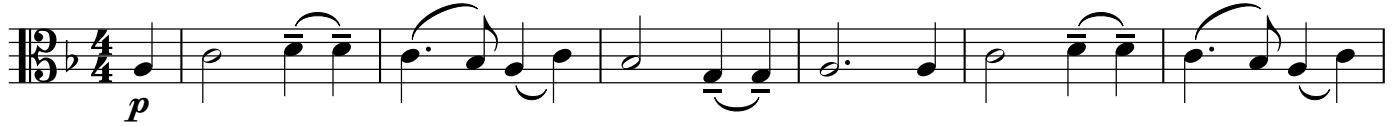
Viola (Tenor)

# My Jesus, I Love Thee

Original key: Concert F major

Adoniram J. Gordon (1836-1895), arr. Mark Feezell

♩ = 104



7



13



Viola (Tenor)

# O for a Thousand Tongues to Sing

Original key: Concert A major

Carl Gläser (1784-1829), Lowell Mason (1792-1872), arr. Mark Feezell

$\text{♩} = 84$

The first staff of music is in the key of A major (two sharps) and 3/2 time. It begins with a dynamic marking of *mf*. The notation consists of a series of eighth notes with accents, starting on the second line (F#) and moving stepwise up to the second space (D), then down to the first space (B), and finally to the first line (A). The notes are: F#4, G4, A4, B4, C5, B4, A4, G4, F#4, E4, D4, C4, B3, A3.

5

The second staff of music continues in the key of A major and 3/2 time. It begins with a measure rest for 5 measures, followed by a series of eighth notes: F#4, G4, A4, B4, C5, B4, A4, G4, F#4, E4, D4, C4, B3, A3. The piece concludes with a double bar line and a final whole note on A3.





Viola (Tenor)

# When I Survey the Wondrous Cross

Original key: Concert F major

From a Gregorian chant,  
harm. Lowell Mason (1792-1872), arr. Mark Feezell

♩ = 104



7



13

