

Amazing Grace

Easy arrangement in ALL 12 keys

♩ = 92

American melody from Carrell & Clayton's "Virginia Harmony," 1831

Arr. Mark Fezell

Trumpet in B♭ solo

mp

7

mf *f* *mf*

13

1. 2.
mp *mp*

Amazing Grace

Easy arrangement in ALL 12 keys

American melody from Carrell & Clayton's "Virginia Harmony," 1831

Arr. Mark Fezell

♩ = 92

Trumpet in B♭ solo

The first staff of music is in treble clef with a key signature of two flats (B♭ and E♭). It begins with a double bar line and a repeat sign. The melody consists of quarter notes and half notes, mostly beamed together. The dynamic marking *mp* is placed below the first measure. The staff ends with a fermata over the final note.

The second staff of music continues the melody from the first staff. It starts with a measure rest labeled '7'. The melody features a mix of quarter and eighth notes, with some beaming. Dynamic markings *mf*, *f*, and *mf* are placed below the staff, with lines indicating the duration of each dynamic level.

The third staff of music continues the melody. It starts with a measure rest labeled '13'. The melody consists of quarter notes and half notes. There are two first endings, labeled '1.' and '2.', indicated by brackets above the staff. The dynamic marking *mp* is placed below the staff. The piece concludes with a double bar line.

Amazing Grace

Easy arrangement in ALL 12 keys

♩ = 92

American melody from Carrell & Clayton's "Virginia Harmony," 1831

Arr. Mark Fezell

Trumpet in B♭ solo

Musical notation for the first staff of the trumpet solo. It begins with a treble clef, a key signature of three sharps (F#, C#, G#), and a common time signature. The melody starts with a quarter rest, followed by a quarter note G4, a quarter note A4, a quarter note B4, a quarter note A4, a quarter note G4, a quarter note F#4, a quarter note E4, a quarter note D4, a quarter note C4, a quarter note B3, a quarter note A3, and a quarter note G3. The dynamic marking *mp* is placed below the first measure. A repeat sign is present at the end of the staff.

Musical notation for the second staff of the trumpet solo, starting at measure 7. The melody continues with a half note G4, a half note A4, a quarter note B4, a quarter note A4, a quarter note G4, a quarter note F#4, a quarter note E4, a quarter note D4, a quarter note C4, a quarter note B3, a quarter note A3, and a quarter note G3. The dynamic markings *mf*, *f*, and *mf* are placed below the first, second, and third measures respectively.

Musical notation for the third staff of the trumpet solo, starting at measure 13. The melody continues with a half note G4, a half note A4, a quarter note B4, a quarter note A4, a quarter note G4, a quarter note F#4, a quarter note E4, a quarter note D4, a quarter note C4, a quarter note B3, a quarter note A3, and a quarter note G3. The dynamic marking *mp* is placed below the first measure. A first ending bracket labeled "1." spans measures 13-14, and a second ending bracket labeled "2." spans measures 15-16. The piece concludes with a double bar line.

Amazing Grace

Easy arrangement in ALL 12 keys

American melody from Carrell & Clayton's "Virginia Harmony," 1831

Arr. Mark Fezell

♩ = 92

Trumpet in B♭ solo

The first staff of music is in treble clef and contains the first six measures of the piece. It begins with a repeat sign. The notes are: G4 (quarter), A4 (quarter), B4 (quarter), A4-G4 (beamed eighth notes), F4 (quarter), E4 (quarter), D4 (half). The dynamic marking *mp* is placed below the first measure. A hairpin crescendo is shown from measure 1 to 6, ending with a fermata over the final note.

The second staff of music contains measures 7 through 12. It starts with a fermata over the first note (G4). The notes are: G4 (quarter), A4 (quarter), B4 (quarter), A4-G4 (beamed eighth notes), F4 (quarter), E4 (quarter), D4 (half). The dynamic markings are *mf* at the start, *f* at measure 9, and *mf* at measure 12. A hairpin crescendo is shown from measure 7 to 9, and a hairpin decrescendo is shown from measure 9 to 12.

The third staff of music contains measures 13 through 16. It starts with a fermata over the first note (G4). The notes are: G4 (quarter), A4 (quarter), B4 (quarter), A4-G4 (beamed eighth notes), F4 (quarter), E4 (quarter), D4 (half). The dynamic marking *mp* is placed below the first measure. Above the staff, there are two first endings: the first ending covers measures 13-15 and ends with a repeat sign, and the second ending covers measures 14-16 and ends with a double bar line. The dynamic marking *mp* is also placed below the first ending.

Amazing Grace

Easy arrangement in ALL 12 keys

American melody from Carrell & Clayton's "Virginia Harmony," 1831

Arr. Mark Feezell

♩ = 92

Trumpet in B \flat solo

Musical notation for Trumpet in B \flat solo. The piece is in C major with a key signature of two flats (B \flat and E \flat) and a 3/4 time signature. The tempo is 92 beats per minute. The notation includes dynamics such as *mp* (mezzo-piano), *mf* (mezzo-forte), and *f* (forte). It features first and second endings at measure 13.

7

13

Amazing Grace

Easy arrangement in ALL 12 keys

American melody from Carrell & Clayton's "Virginia Harmony," 1831

Arr. Mark Feezell

♩ = 92

Trumpet in B♭ solo

Musical notation for the first staff of the trumpet solo, measures 1-6. The key signature is one sharp (F#) and the time signature is 4/4. The melody consists of quarter notes and half notes with slurs. The dynamic marking *mp* is placed below the first measure. A repeat sign is present at the end of the staff.

Musical notation for the second staff of the trumpet solo, measures 7-12. The key signature is one sharp (F#) and the time signature is 4/4. The melody continues with quarter notes and half notes, including a triplet of eighth notes in measure 10. Dynamic markings *mf*, *f*, and *mf* are indicated with hairpins across the measures.

Musical notation for the third staff of the trumpet solo, measures 13-16. The key signature is one sharp (F#) and the time signature is 4/4. The melody concludes with quarter notes and half notes. A first ending bracket (1.) spans measures 14-15, and a second ending bracket (2.) spans measures 15-16. Dynamic markings *mp* are placed below the first and second endings.

Amazing Grace

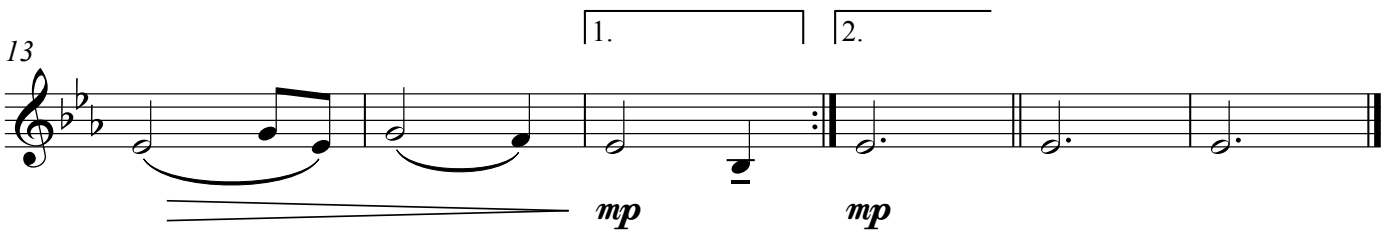
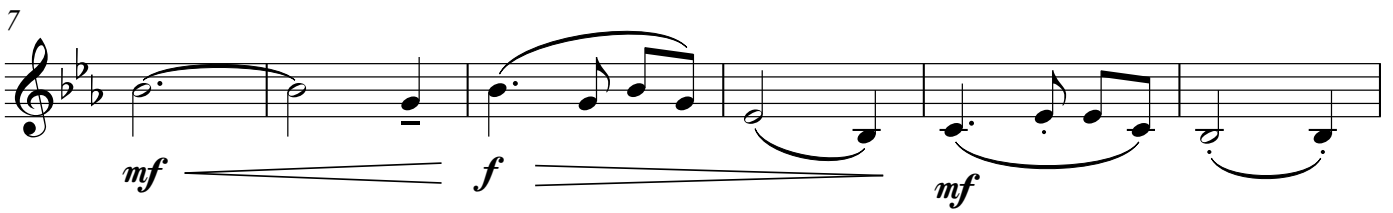
Easy arrangement in ALL 12 keys

American melody from Carrell & Clayton's "Virginia Harmony," 1831

Arr. Mark Fezell

♩ = 92

Trumpet in B♭ solo



Amazing Grace

Easy arrangement in ALL 12 keys

American melody from Carrell & Clayton's "Virginia Harmony," 1831

Arr. Mark Feezell

♩ = 92

Trumpet in B♭ solo

mp

7

mf f mf

13

1. 2. mp mp

Amazing Grace

Easy arrangement in ALL 12 keys

American melody from Carrell & Clayton's "Virginia Harmony," 1831

Arr. Mark Feezell

♩ = 92

Trumpet in B♭ solo

The first staff of music is in treble clef with a key signature of one flat (B♭). It begins with a double bar line and a repeat sign. The melody consists of quarter notes and half notes, mostly on a single line. The dynamic marking *mp* is placed below the first note. The staff ends with a fermata.

The second staff of music continues the melody from measure 7. It features a dynamic crescendo from *mf* to *f* and then back to *mf*. The notes are connected by slurs, and there are some dotted rhythms. The dynamic markings *mf*, *f*, and *mf* are placed below the staff.

The third staff of music starts at measure 13. It includes first and second endings, indicated by boxes labeled '1.' and '2.' above the staff. The melody concludes with a double bar line. The dynamic marking *mp* is placed below the staff.

Amazing Grace

Easy arrangement in ALL 12 keys

♩ = 92 American melody from Carrell & Clayton's "Virginia Harmony," 1831
Arr. Mark Feezell

Trumpet in B♭ solo

mp

7

mf *f* *mf*

13

1. 2.
mp *mp*

Amazing Grace

Easy arrangement in ALL 12 keys

American melody from Carrell & Clayton's "Virginia Harmony," 1831

Arr. Mark Fezell

♩ = 92

Trumpet in B♭ solo

Musical notation for the first staff of the trumpet solo. It begins with a treble clef, a key signature of one sharp (F#), and a common time signature. The melody starts with a quarter rest, followed by a quarter note G4, a quarter note A4, a quarter note B4, a quarter note C5, a quarter note B4, a quarter note A4, a quarter note G4, and a quarter note F#4. The dynamics are marked *mp* at the beginning and *mf* at the end.

Musical notation for the second staff of the trumpet solo. It begins with a treble clef, a key signature of one sharp (F#), and a common time signature. The melody starts with a quarter note G4, a quarter note A4, a quarter note B4, a quarter note C5, a quarter note B4, a quarter note A4, a quarter note G4, and a quarter note F#4. The dynamics are marked *mf* at the beginning, *f* in the middle, and *mf* at the end.

Musical notation for the third staff of the trumpet solo. It begins with a treble clef, a key signature of one sharp (F#), and a common time signature. The melody starts with a quarter note G4, a quarter note A4, a quarter note B4, a quarter note C5, a quarter note B4, a quarter note A4, a quarter note G4, and a quarter note F#4. The dynamics are marked *mp* at the beginning and *mp* at the end. There are first and second endings indicated by brackets and numbers 1 and 2.

Amazing Grace

Easy arrangement in ALL 12 keys

♩ = 92

American melody from Carrell & Clayton's "Virginia Harmony," 1831

Arr. Mark Fezell

Trumpet in B♭ solo

Musical notation for the first staff of the trumpet solo. It begins with a treble clef, a key signature of three flats (B-flat major), and a 3/4 time signature. The first measure is a whole rest, followed by a repeat sign. The melody consists of quarter and eighth notes with slurs. The dynamic marking *mp* is placed below the first measure.

Musical notation for the second staff of the trumpet solo, starting at measure 7. It features a treble clef, three flats, and a 3/4 time signature. The melody continues with quarter and eighth notes, including slurs and a fermata. Dynamic markings *mf*, *f*, and *mf* are placed below the staff.

Musical notation for the third staff of the trumpet solo, starting at measure 13. It features a treble clef, three flats, and a 3/4 time signature. The melody concludes with quarter notes and a double bar line. Dynamic markings *mp* and *mp* are placed below the staff. Above the staff, first and second endings are indicated with boxes labeled '1.' and '2.'.