

Violin

Duets from the Two-Part Inventions

Invention 1, BWV 772
Original key: Concert C major

Johann Sebastian Bach (1685-1750)
arr. Mark Feezell

$\text{♩} = 74$



2
Violin

Duets from the Two-Part Inventions

Invention 2, BWV 773
Original key: Concert c minor

Johann Sebastian Bach (1685-1750)
arr. Mark Feezell

♩ = 60

mp

4

7

10

13

16

19

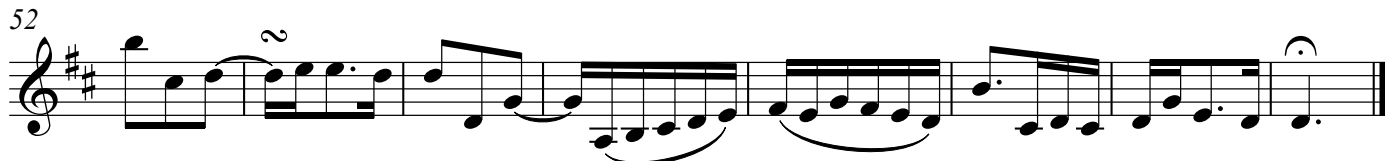
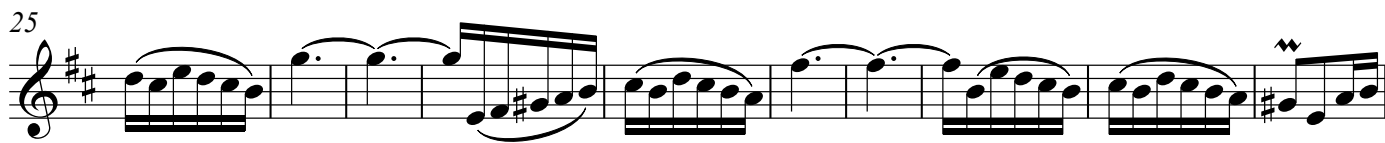
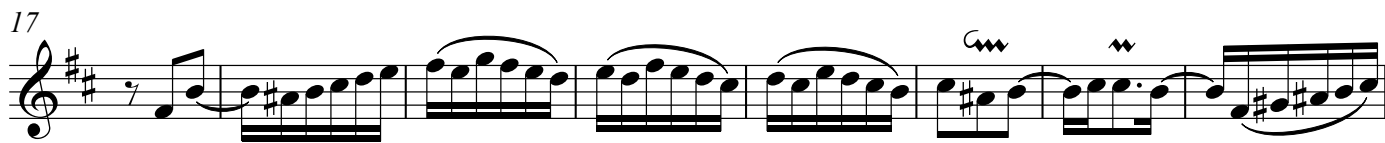
22

24

Duets from the Two-Part Inventions

Invention 3, BWV 774
Original key: Concert D majorJohann Sebastian Bach (1685-1750)
arr. Mark Feezell

♩ = 130



Duets from the Two-Part Inventions

Invention 4, BWV 775
Original key: Concert D minor

Johann Sebastian Bach (1685-1750)
arr. Mark Feezell

♩ = 60



This page intentionally left blank.

6
Violin

Duets from the Two-Part Inventions

Invention 5, BWV 776
Original key: Concert Eb major

Johann Sebastian Bach (1685-1750)
arr. Mark Feezell

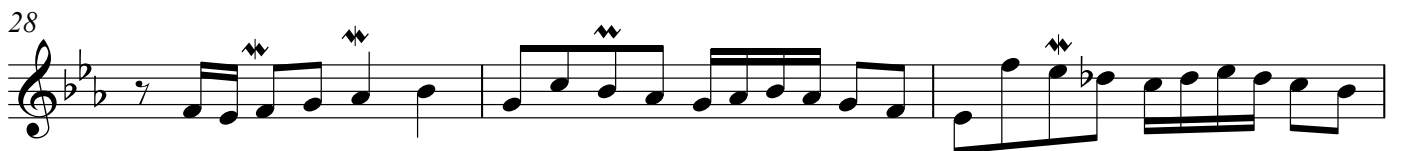
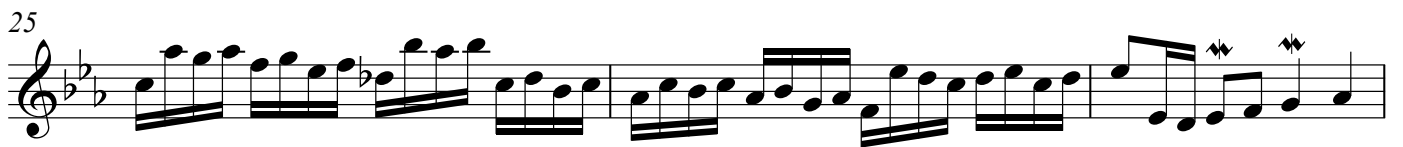
$\text{♩} = 66$
mf

5

7

10

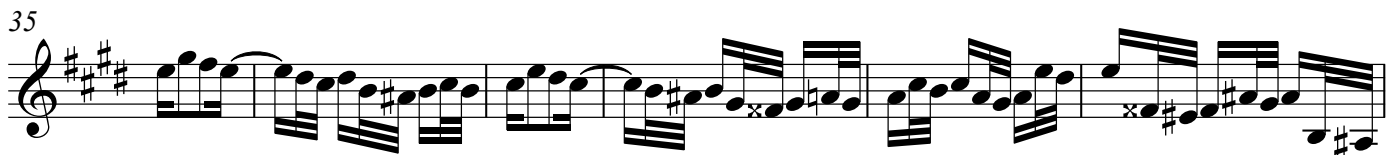
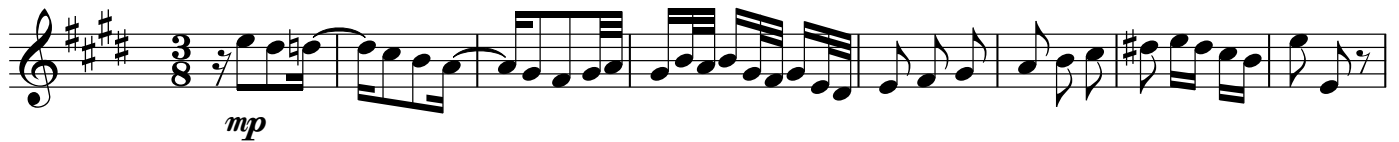
13



Duets from the Two-Part Inventions

Invention 6, BWV 777
Original key: Concert E majorJohann Sebastian Bach (1685-1750)
arr. Mark Feezell

♩ = 88



Violin

Duets from the Two-Part Inventions

Invention 7, BWV 778
Original key: Concert E minor

Johann Sebastian Bach (1685-1750)
arr. Mark Feezell

$\text{♩} = 76$
mf

4

7

11

14

17

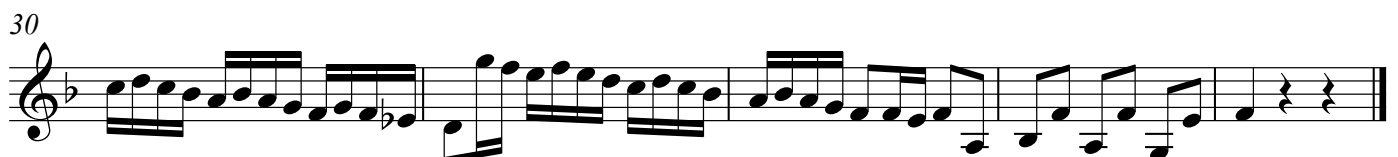
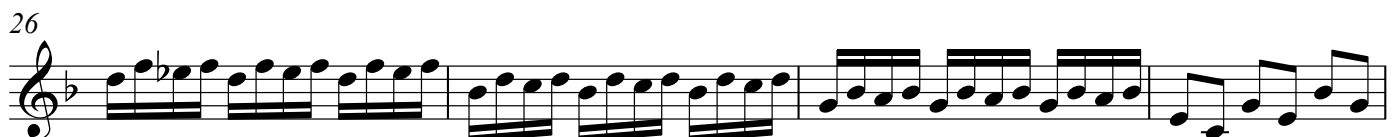
20

Duets from the Two-Part Inventions

Invention 8, BWV 779
Original key: Concert F major

Johann Sebastian Bach (1685-1750)
arr. Mark Feezell

♩ = 110



Violin

Duets from the Two-Part Inventions

Invention 9, BWV 780
Original key: Concert F minor

Johann Sebastian Bach (1685-1750)
arr. Mark Feezell

$\text{♩} = 50$
pp

5

9

14

19

23

28

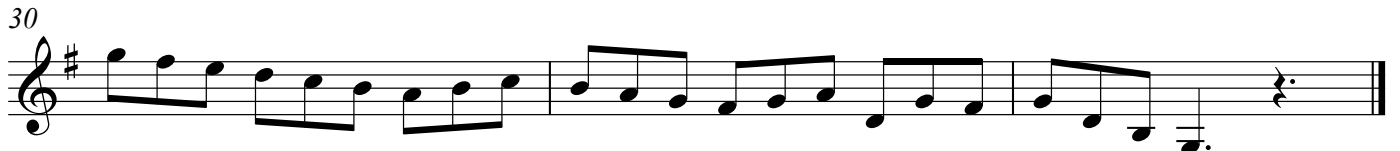
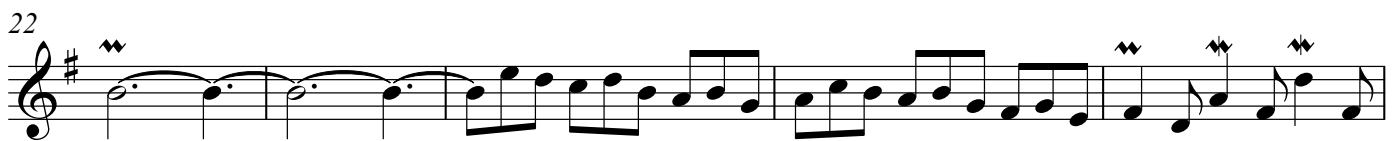
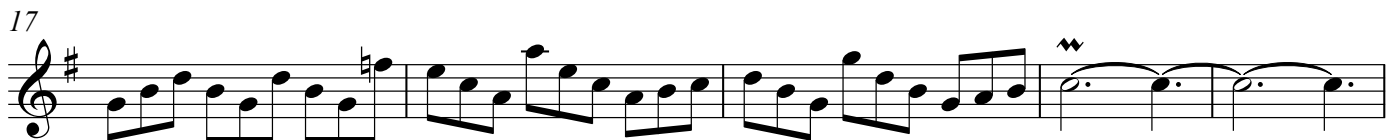
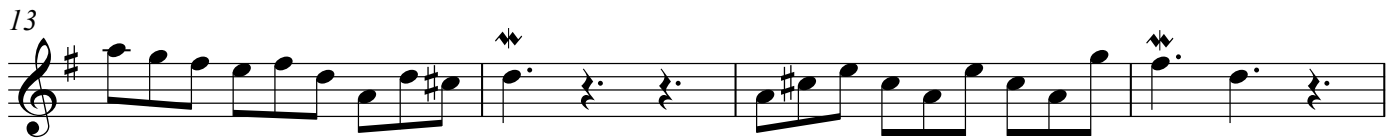
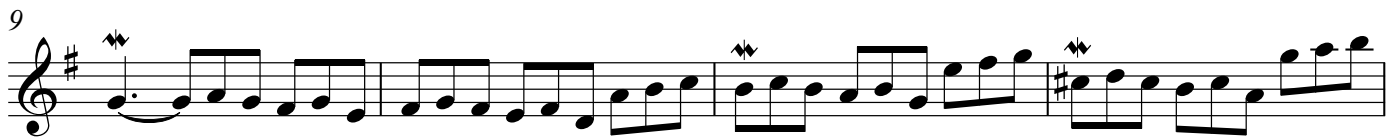
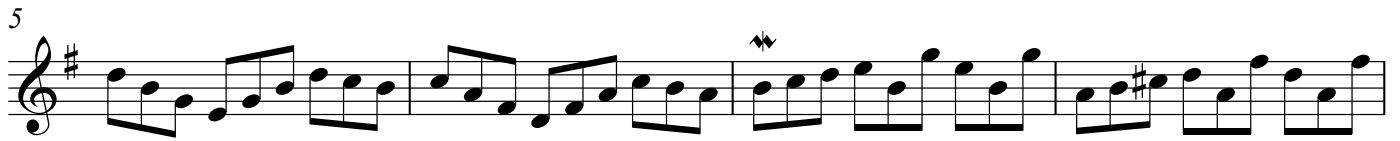
31

Duets from the Two-Part Inventions

Invention 10, BWV 781
Original key: Concert G major

Johann Sebastian Bach (1685-1750)
arr. Mark Feezell

♩ = 112



Duets from the Two-Part Inventions

Invention 11, BWV 782
Original key: Concert G minorJohann Sebastian Bach (1685-1750)
arr. Mark Feezell

♩ = 74

mp

4

7

11

14

17

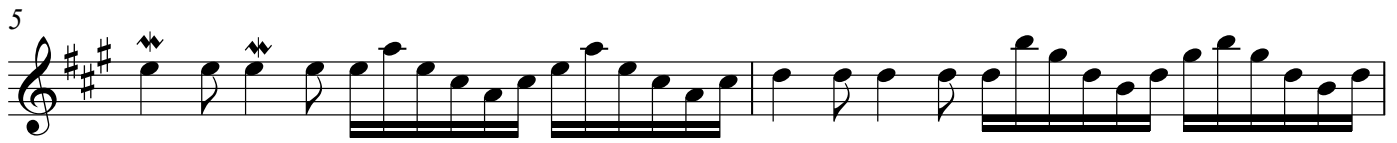
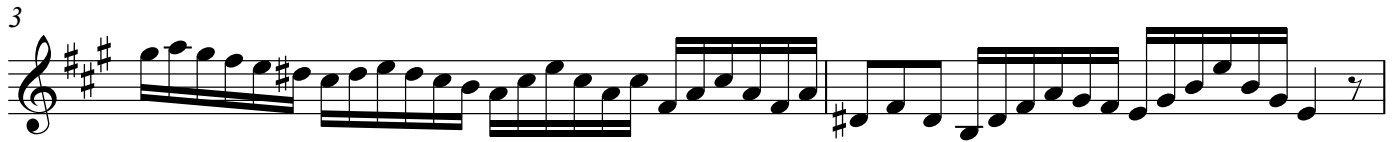
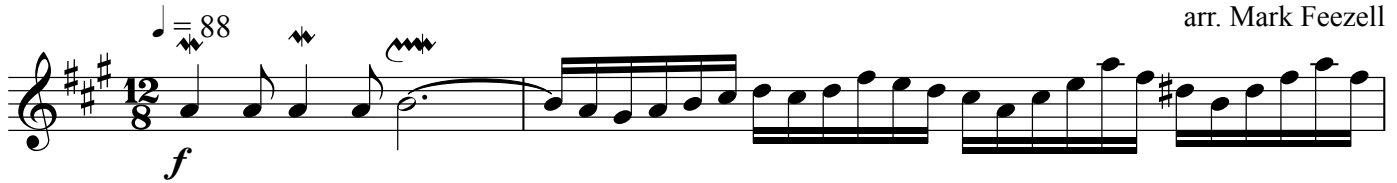
20

22

Duets from the Two-Part Inventions

Invention 12, BWV 783
Original key: Concert A major

Johann Sebastian Bach (1685-1750)
arr. Mark Feezell



11

13

15

17

19

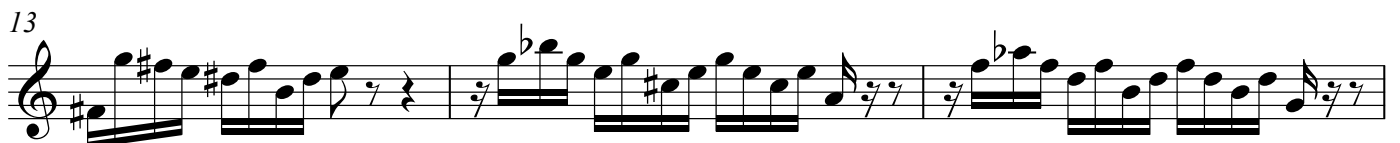
21

Duets from the Two-Part Inventions

Invention 13, BWV 784
Original key: Concert A minor

Johann Sebastian Bach (1685-1750)
arr. Mark Feezell

$\text{♩} = 76$



Duets from the Two-Part Inventions

Invention 14, BWV 785
Original key: Concert Bb major

Johann Sebastian Bach (1685-1750)
arr. Mark Feezell

$\text{♩} = 58$

mf

3

5

9

12

14

16

18

Duets from the Two-Part Inventions

Invention 15, BWV 786

Original key: Concert B minor

Johann Sebastian Bach (1685-1750)

arr. Mark Feezell

$\text{♩} = 88$

mp

4

7

10

13

16

18

20