



# Duets from the Two-Part Inventions

Invention 2, BWV 773  
Original key: Concert c minor

Johann Sebastian Bach (1685-1750)  
arr. Mark Feezell

$\text{♩} = 60$

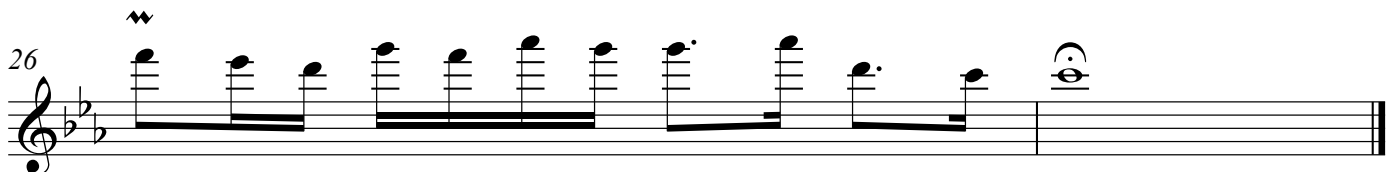
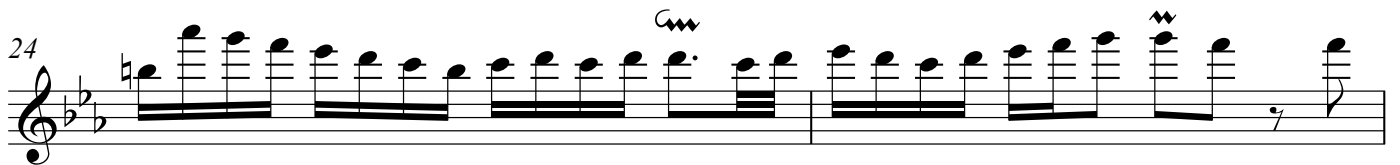
*mp*

4

7

10

13



# Duets from the Two-Part Inventions

Invention 3, BWV 774  
Original key: Concert D major

Johann Sebastian Bach (1685-1750)  
arr. Mark Feezell

$\text{♩} = 130$

*mf*

7

15

22

31

39

47

54

## Duets from the Two-Part Inventions

Invention 4, BWV 775  
Original key: Concert D minorJohann Sebastian Bach (1685-1750)  
arr. Mark Feezell

$\text{♩} = 60$

*f*

9

17

26

32

38

46

# Duets from the Two-Part Inventions

Invention 5, BWV 776  
Original key: Concert Eb major

Johann Sebastian Bach (1685-1750)  
arr. Mark Feezell

♩ = 66

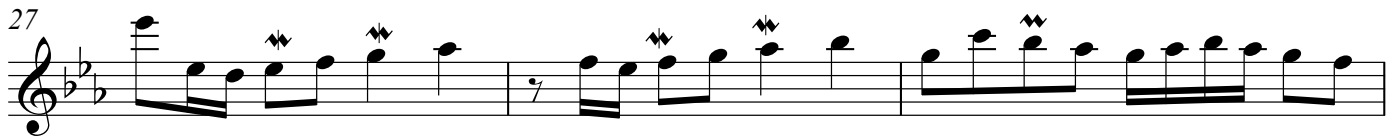
*mf*

5

7

10

13



# Duets from the Two-Part Inventions

Invention 6, BWV 777  
Original key: Concert E major

Johann Sebastian Bach (1685-1750)  
arr. Mark Feezell

*mp*

9

16

23

29

33

38

43

51

59



Flute

## Duets from the Two-Part Inventions

Invention 7, BWV 778  
Original key: Concert E minorJohann Sebastian Bach (1685-1750)  
arr. Mark Feezell

♩ = 76

*mf*

4

7

11

14

17

20

# Duets from the Two-Part Inventions

Invention 8, BWV 779  
Original key: Concert F major

Johann Sebastian Bach (1685-1750)  
arr. Mark Feezell

$\text{♩} = 96$

*f*

5

9

14

18

22

26

29

32

## Duets from the Two-Part Inventions

Invention 9, BWV 780  
Original key: Concert F minorJohann Sebastian Bach (1685-1750)  
arr. Mark Feezell

$\text{♩} = 50$

*pp*

5

9

14

19

23

28

31

# Duets from the Two-Part Inventions

Invention 10, BWV 781  
Original key: Concert G major

Johann Sebastian Bach (1685-1750)  
arr. Mark Feezell

$\text{♩} = 112$

*mf*

5

9

13

17

22

27

30

## Duets from the Two-Part Inventions

## Invention 11, BWV 782

Original key: Concert G minor

Johann Sebastian Bach (1685-1750)

arr. Mark Feezell

 $\text{♩} = 74$ 

*mp*

3

6

9

12

14

17

20

22

# Duets from the Two-Part Inventions

Invention 12, BWV 783  
Original key: Concert A major

Johann Sebastian Bach (1685-1750)  
arr. Mark Feezell

Measures 1-2 of the flute part. The key signature is A major (three sharps: F#, C#, G#). The time signature is 12/8. The first measure starts with a tempo marking of ♩ = 88. The piece begins with a forte (*f*) dynamic. The notation includes a half note G4, a quarter note A4, and a quarter note B4 in the first measure, followed by a half note C5 with a fermata. The second measure contains a continuous eighth-note scale starting on C5.

Measures 3-4 of the flute part. The notation continues the eighth-note scale from measure 2. Measure 3 ends with a quarter rest, and measure 4 begins with a quarter note G4, followed by a quarter note A4, and a quarter note B4.

Measures 5-6 of the flute part. Measure 5 starts with a quarter note G4, followed by a quarter note A4, and a quarter note B4. Measure 6 continues the eighth-note scale from measure 2.

Measures 7-8 of the flute part. Measure 7 begins with a quarter rest, followed by a quarter note G4, and a quarter note A4. Measure 8 continues the eighth-note scale from measure 2.

Measures 9-10 of the flute part. Measure 9 starts with a quarter note G4, followed by a quarter note A4, and a quarter note B4. Measure 10 continues the eighth-note scale from measure 2.

Measures 11-12 of the flute part. Measure 11 continues the eighth-note scale from measure 2. Measure 12 ends with a quarter note G4, followed by a quarter note A4, and a quarter note B4.

12

16  
Flute

# Duets from the Two-Part Inventions

Invention 13, BWV 784  
Original key: Concert A minor

Johann Sebastian Bach (1685-1750)  
arr. Mark Feezell

$\text{♩} = 76$

*mf*

4

7

10

13

16

18

20

23

24



Flute

## Duets from the Two-Part Inventions

Invention 14, BWV 785  
Original key: Concert B $\flat$  major

Johann Sebastian Bach (1685-1750)  
arr. Mark Feezell

♩ = 58

*mf*

3

5

9

11

13

15

17

19

# Duets from the Two-Part Inventions

Invention 15, BWV 786

Original key: Concert B minor

Johann Sebastian Bach (1685-1750)

arr. Mark Feezell

$\text{♩} = 88$

*mp*

4

7

10

13

16

18

20