

Flute

# Duets from the Two-Part Inventions

Invention 1, BWV 772  
Original key: Concert C major

Johann Sebastian Bach (1685-1750)  
arr. Mark Feezell

$\text{♩} = 74$

*mf*

4

6

9

13

16

20

# Duets from the Two-Part Inventions

Invention 2, BWV 773  
Original key: Concert c minor

Johann Sebastian Bach (1685-1750)  
arr. Mark Feezell

$\text{♩} = 60$

*mp*

4

7

10

13

16



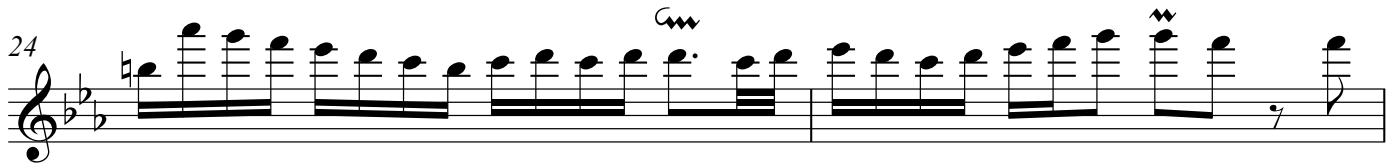
19



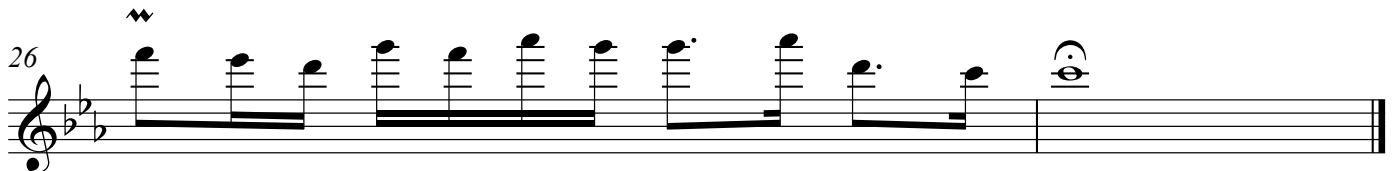
22



24



26



4  
Flute

# Duets from the Two-Part Inventions

Invention 3, BWV 774  
Original key: Concert D major

Johann Sebastian Bach (1685-1750)  
arr. Mark Feezell

$\text{♩} = 130$

*mf*

7

15

22

31

39

47

54

Flute

## Duets from the Two-Part Inventions

Invention 4, BWV 775  
Original key: Concert D minorJohann Sebastian Bach (1685-1750)  
arr. Mark Feezell

$\text{♩} = 60$

*f*

9

17

26

32

38

46

6  
Flute

# Duets from the Two-Part Inventions

Invention 5, BWV 776

Original key: Concert E $\flat$  major

Johann Sebastian Bach (1685-1750)

arr. Mark Feezell

$\text{♩} = 66$

*mf*

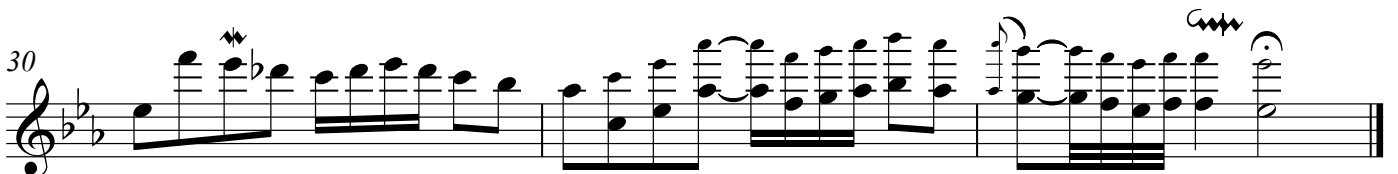
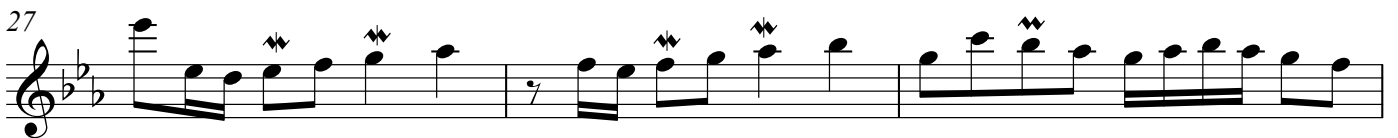
5

7

10

13

15



# Duets from the Two-Part Inventions

Invention 6, BWV 777  
Original key: Concert E major

Johann Sebastian Bach (1685-1750)  
arr. Mark Feezell

♩ = 88

*mp*

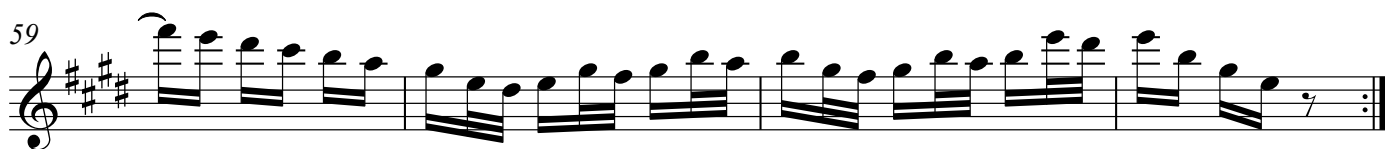
9

16

23

29





# Duets from the Two-Part Inventions

Invention 7, BWV 778  
Original key: Concert E minor

Johann Sebastian Bach (1685-1750)  
arr. Mark Feezell

♩ = 76

*mf*

4

7

11

14

17

20

Flute

## Duets from the Two-Part Inventions

Invention 8, BWV 779  
 Original key: Concert F major

Johann Sebastian Bach (1685-1750)  
 arr. Mark Feezell

$\text{♩} = 96$

*f*

5

9

14

18

22

26

29

32

# Duets from the Two-Part Inventions

Invention 9, BWV 780  
Original key: Concert F minor

Johann Sebastian Bach (1685-1750)  
arr. Mark Feezell

$\text{♩} = 50$

*pp*

5

9

14

19

23

28

31

Flute

## Duets from the Two-Part Inventions

Invention 10, BWV 781

Original key: Concert G major

Johann Sebastian Bach (1685-1750)

arr. Mark Feezell

$\text{♩} = 112$

*mf*

5

9

13

17

22

27

30

# Duets from the Two-Part Inventions

Invention 11, BWV 782  
Original key: Concert G minor

Johann Sebastian Bach (1685-1750)  
arr. Mark Feezell

♩ = 74

*mp*

3

6

9

12



14



17



20



22



# Duets from the Two-Part Inventions

Invention 12, BWV 783  
Original key: Concert A major

Johann Sebastian Bach (1685-1750)  
arr. Mark Feezell

♩ = 88

*f*

3

5

7

9

11





# Duets from the Two-Part Inventions

Invention 13, BWV 784  
Original key: Concert A minor

Johann Sebastian Bach (1685-1750)  
arr. Mark Feezell

♩ = 76



*mf*

4



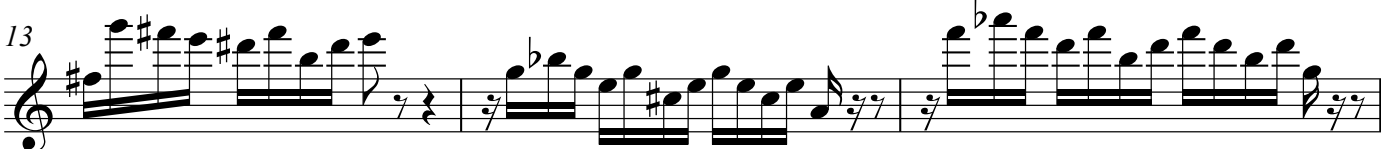
7

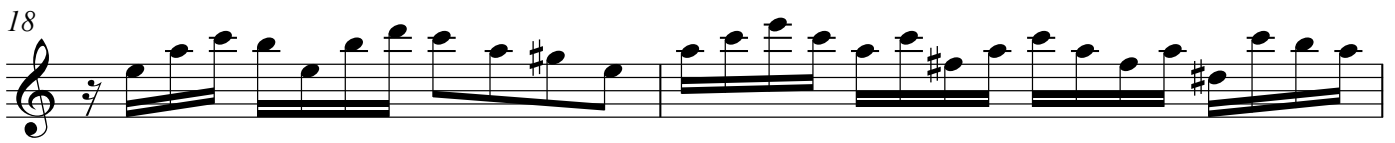
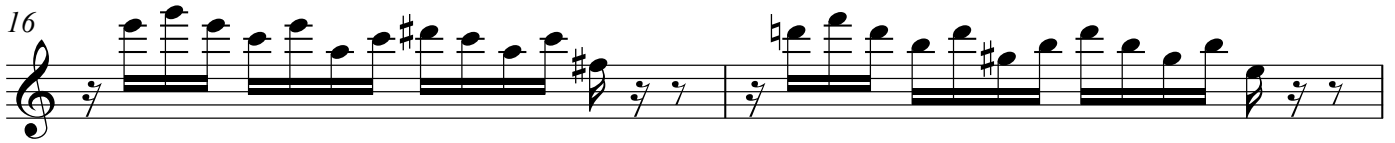


10



13





# Duets from the Two-Part Inventions

Invention 14, BWV 785  
Original key: Concert B $\flat$  major

Johann Sebastian Bach (1685-1750)  
arr. Mark Feezell

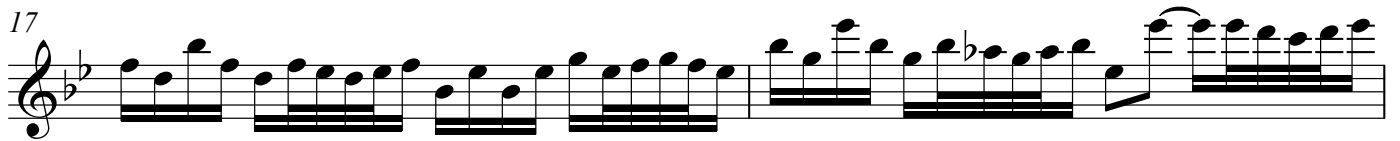
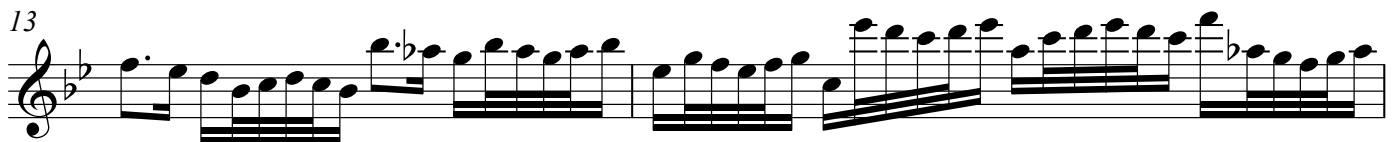
$\text{♩} = 58$

*mf*

3

5

9



# Duets from the Two-Part Inventions

Invention 15, BWV 786  
Original key: Concert B minor

Johann Sebastian Bach (1685-1750)  
arr. Mark Feezell

$\text{♩} = 88$   
*mp*

4

7

10

13

16

18

20