

Clarinet in B \flat

Duets from the Two-Part Inventions

Invention 1, BWV 772
Original key: Concert C major

Johann Sebastian Bach (1685-1750)
arr. Mark Feezell

$\text{♩} = 74$

mf

4

7

10

13

16

20

Duets from the Two-Part Inventions

Invention 2, BWV 773
Original key: Concert c minorJohann Sebastian Bach (1685-1750)
arr. Mark Feezell $\text{♩} = 60$

mp

4

7

10

13

16

19

22

24

Clarinet in B \flat

Duets from the Two-Part Inventions

Invention 3, BWV 774
Original key: Concert D major

Johann Sebastian Bach (1685-1750)
arr. Mark Fezell

$\text{♩} = 130$

8

17

25

35

44

52

Duets from the Two-Part Inventions

Invention 4, BWV 775
Original key: Concert D minor Johann Sebastian Bach (1685-1750)

arr. Mark Feezell

$\text{♩} = 60$

f

9

17

26

32

39

46

Clarinet in B \flat

Duets from the Two-Part Inventions

Invention 5, BWV 776

Original key: Concert E \flat major

Johann Sebastian Bach (1685-1750)

arr. Mark Feezell

$\text{♩} = 66$
mf

5

7

10

13

15

19

22

25

28

31

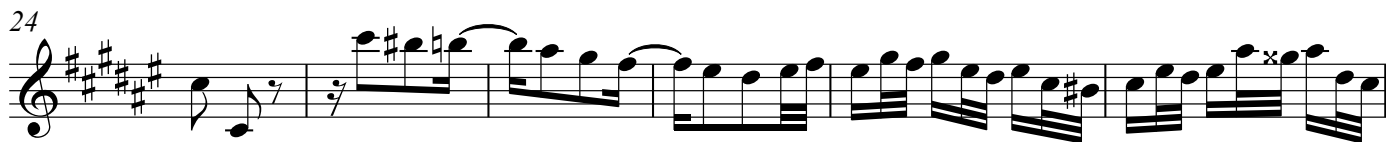
Duets from the Two-Part Inventions

Invention 6, BWV 777

Original key: Concert E major

Johann Sebastian Bach (1685-1750)

arr. Mark Feezell

 $\text{♩} = 88$ 

Clarinet in B \flat

Duets from the Two-Part Inventions

Invention 7, BWV 778

Original key: Concert E minor

Johann Sebastian Bach (1685-1750)

arr. Mark Feezell

$\text{♩} = 76$

mf

4

7

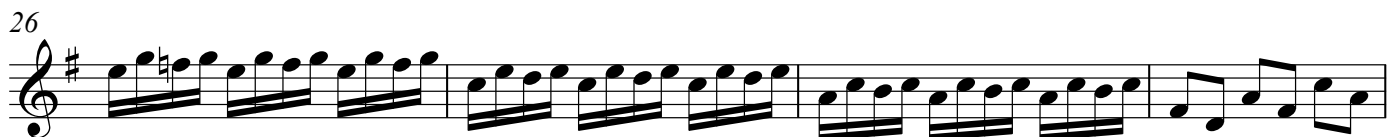
11

14

17

20

Duets from the Two-Part Inventions

Invention 8, BWV 779
Original key: Concert F majorJohann Sebastian Bach (1685-1750)
arr. Mark Feezell $\text{♩} = 110$ 

Clarinet in B \flat

Duets from the Two-Part Inventions

Invention 9, BWV 780

Original key: Concert F minor

Johann Sebastian Bach (1685-1750)

arr. Mark Feezell

 $\text{♩} = 50$ 

Duets from the Two-Part Inventions

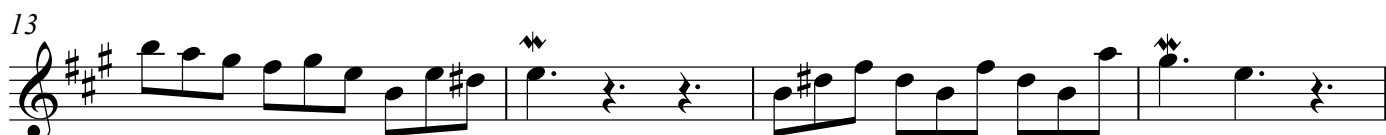
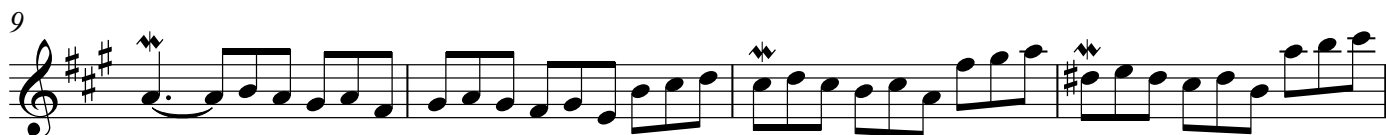
Invention 10, BWV 781

Original key: Concert G major

Johann Sebastian Bach (1685-1750)

arr. Mark Feezell

$\text{♩} = 112$



Clarinet in B \flat

Duets from the Two-Part Inventions

Invention 11, BWV 782

Original key: Concert G minor

Johann Sebastian Bach (1685-1750)

arr. Mark Feezell

$\text{♩} = 74$

mp

4

7

11

14

17

20

22

12
Clarinet in B \flat Duets from the Two-Part Inventions

Invention 12, BWV 783
Original key: Concert A major

Johann Sebastian Bach (1685-1750)
arr. Mark Feezell

$\text{♩} = 88$
f

3
5
7
9
11
13
15
17
19
21

Clarinet in B \flat

Duets from the Two-Part Inventions

Invention 13, BWV 784

Johann Sebastian Bach (1685-1750)

Original key: Concert A minor

arr. Mark Feezell

 $\text{♩} = 76$

mf

4

7

10

13

16

19

21

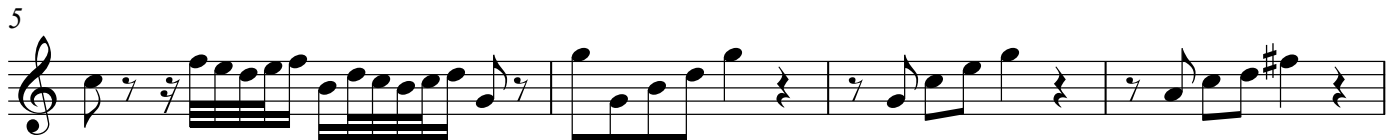
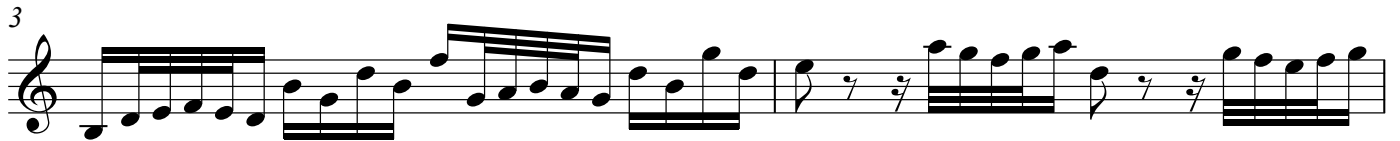
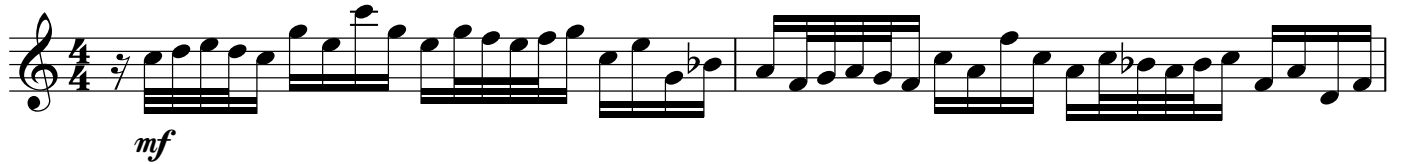
24

Duets from the Two-Part Inventions

Invention 14, BWV 785
Original key: Concert B \flat major

Johann Sebastian Bach (1685-1750)
arr. Mark Feezell

$\text{♩} = 58$



Clarinet in B \flat Duets from the Two-Part Inventions

Invention 15, BWV 786

Original key: Concert B minor

Johann Sebastian Bach (1685-1750)

arr. Mark Feezell

$\text{♩} = 88$

mp

4

7

10

13

16

18

20