

Tenor Saxophone

DrFeezell.com

Trios from the Three-Part Inventions

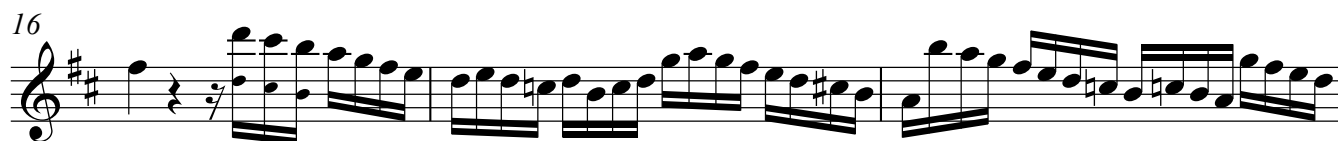
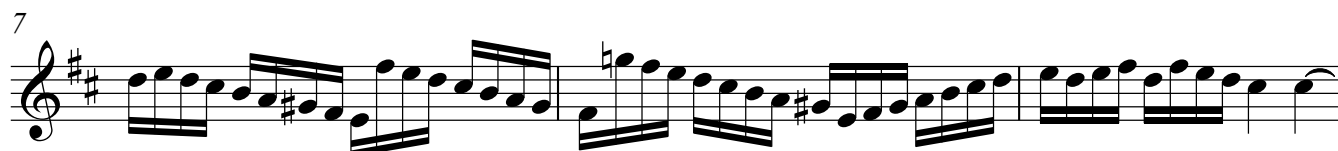
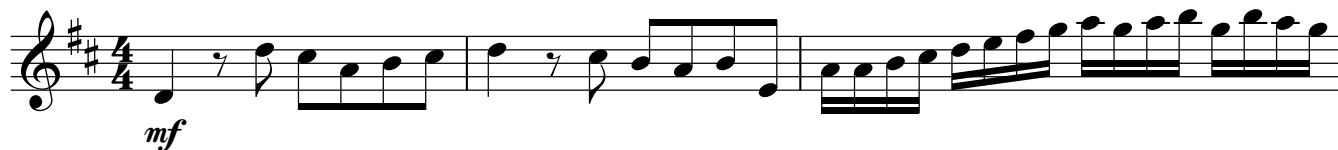
Sinfonia 1, BWV 787

J.S. Bach (1685-1750)

Original key: Concert C major

Arr. Mark Feezell

$\text{♩} = 88$



Tenor Saxophone

Trios from the Three-Part Inventions DrFeezell.com

Sinfonia 2, BWV 788

Original key: Concert C minor

J.S. Bach (1685-1750)

Arr. Mark Feezell

♩. = 60

mp

5

8

11

14

17

19

22

24

3

27



30



Tenor Saxophone

DrFeezell.com

Trios from the Three-Part Inventions

Sinfonia 3, BWV 789

J.S. Bach (1685-1750)

Original key: Concert D major

Arr. Mark Feezell

$\text{♩} = 82$

First line of musical notation for measures 1-3. It begins with a treble clef, a key signature of three sharps (F#, C#, G#), and a 4/4 time signature. The music starts with a forte (*f*) dynamic. The notes are: G4 (quarter), A4 (quarter), B4 (quarter), C5 (quarter), B4-A4 (beamed eighth notes), G4 (quarter), F#4 (quarter), E4 (quarter), D4 (quarter), C4 (half).

4

Second line of musical notation for measures 4-6. Measure 4 starts with a treble clef, key signature of three sharps, and a 4/4 time signature. The notes are: G4 (quarter), A4 (quarter), B4 (quarter), C5 (quarter), B4-A4 (beamed eighth notes), G4 (quarter), F#4 (quarter), E4 (quarter), D4 (quarter), C4 (half).

7

Third line of musical notation for measures 7-10. Measure 7 starts with a treble clef, key signature of three sharps, and a 4/4 time signature. The notes are: G4 (quarter), A4 (quarter), B4 (quarter), C5 (quarter), B4-A4 (beamed eighth notes), G4 (quarter), F#4 (quarter), E4 (quarter), D4 (quarter), C4 (half).

11

Fourth line of musical notation for measures 11-14. Measure 11 starts with a treble clef, key signature of three sharps, and a 4/4 time signature. The notes are: G4 (quarter), A4 (quarter), B4 (quarter), C5 (quarter), B4-A4 (beamed eighth notes), G4 (quarter), F#4 (quarter), E4 (quarter), D4 (quarter), C4 (half).

15

Fifth line of musical notation for measures 15-18. Measure 15 starts with a treble clef, key signature of three sharps, and a 4/4 time signature. The notes are: G4 (quarter), A4 (quarter), B4 (quarter), C5 (quarter), B4-A4 (beamed eighth notes), G4 (quarter), F#4 (quarter), E4 (quarter), D4 (quarter), C4 (half).

19

Sixth line of musical notation for measures 19-22. Measure 19 starts with a treble clef, key signature of three sharps, and a 4/4 time signature. The notes are: G4 (quarter), A4 (quarter), B4 (quarter), C5 (quarter), B4-A4 (beamed eighth notes), G4 (quarter), F#4 (quarter), E4 (quarter), D4 (quarter), C4 (half).

23

Seventh line of musical notation for measures 23-26. Measure 23 starts with a treble clef, key signature of three sharps, and a 4/4 time signature. The notes are: G4 (quarter), A4 (quarter), B4 (quarter), C5 (quarter), B4-A4 (beamed eighth notes), G4 (quarter), F#4 (quarter), E4 (quarter), D4 (quarter), C4 (half).

Tenor Saxophone

DrFeezell.com

Trios from the Three-Part Inventions

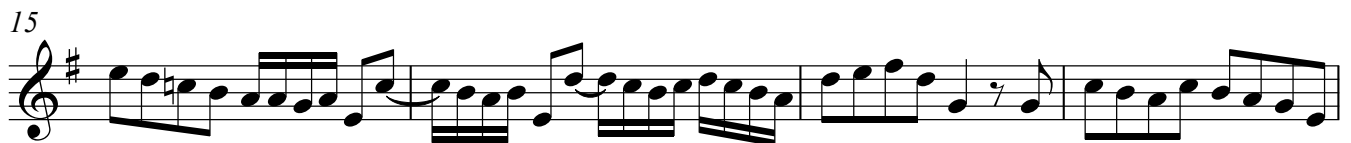
Sinfonia 4, BWV 790

J.S. Bach (1685-1750)

Original key: Concert D minor

Arr. Mark Feezell

♩ = 84



Tenor Saxophone

DrFeezell.com

Trios from the Three-Part Inventions

Sinfonia 5, BWV 791

J.S. Bach (1685-1750)

Original key: Concert C major

Arr. Mark Feezell

$\text{♩} = 72$

p

6

11

16

21

26

31

35