

**SOUTHERN METHODIST UNIVERSITY
FIRST-SEMESTER MASTERY EXAMINATION**

THEORY FUNDAMENTALS

Section	Description	Needed to pass	Time limit
1. Name the Notes	<ul style="list-style-type: none"> • 20 notes are given • 10 treble, 10 bass • up to 3 ledger lines • with accidentals • Students write note names 	18/20	1:10
2. Key Signatures	<ul style="list-style-type: none"> • Write 5 key signatures on the grand staff, given the keys (ex: Ab major) • All major/minor keys possible 	4/5 (no partial credit)	2:00
3. Scales	<ul style="list-style-type: none"> • Notate 5 major and minor scales (ascending only) • All forms of minor are fair game • Use accidentals, not key signatures 	4/5 (no partial credit)	2:45
4. Rhythm (3 subsections)	<ul style="list-style-type: none"> a. Complete a partial measure using 8ths and 16ths with correct beaming, AND b. classify 3 meters by circling the appropriate words (e.g. “simple duple”) c. Add barlines and beaming as needed to make a given ametric rhythm conform to a particular time signature 	<ul style="list-style-type: none"> a. Must be entirely correct b. 5/6 circled words must be correct c. 1 error (beaming OR barline) is allowed 	2:00
5. Intervals (10 questions in 2 subsections)	<ul style="list-style-type: none"> a. Notate 5 simple intervals; some above, some below; without accidentals (e.g. “7th above A” = G) b. Notate 5 total seconds and/or thirds above and below; may involve accidentals; all types of seconds and thirds are possible 	9/10	1:45
6. Triads	<ul style="list-style-type: none"> • Notate 5 triads • Major and minor • Bass or treble clef 	4/5 (no partial credit)	0:50

AURAL SKILLS FUNDAMENTALS will be administered by your Aural Skills instructor

FILL IN THE BLANKS WITH THE NAME OF EACH NOTE. (1:20 each 20 questions; 18/20 to pass)

1 2 3 4 5 6 7 8 9 10

11 12 13 14 15 16 17 18 19 20

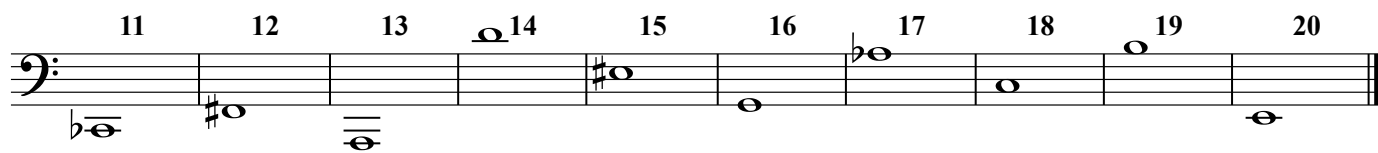
1 2 3 4 5 6 7 8 9 10

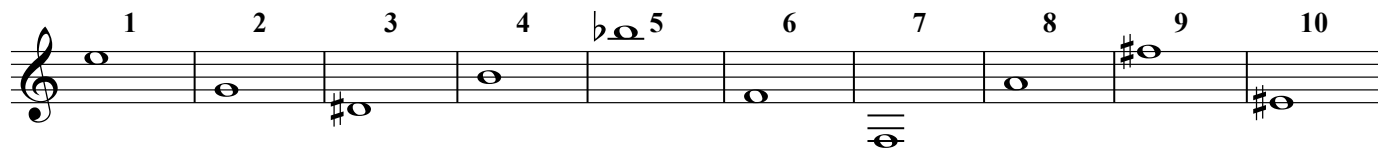
11 12 13 14 15 16 17 18 19 20

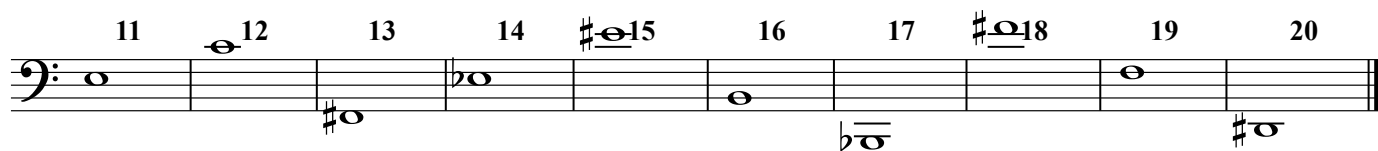
1 2 3 4 5 6 7 8 9 10

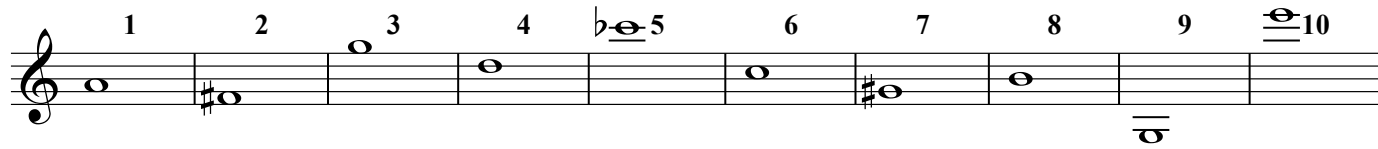
11 12 13 14 15 16 17 18 19 20





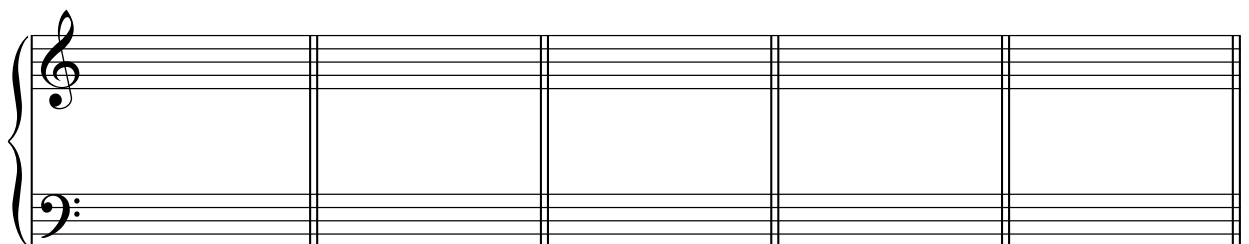
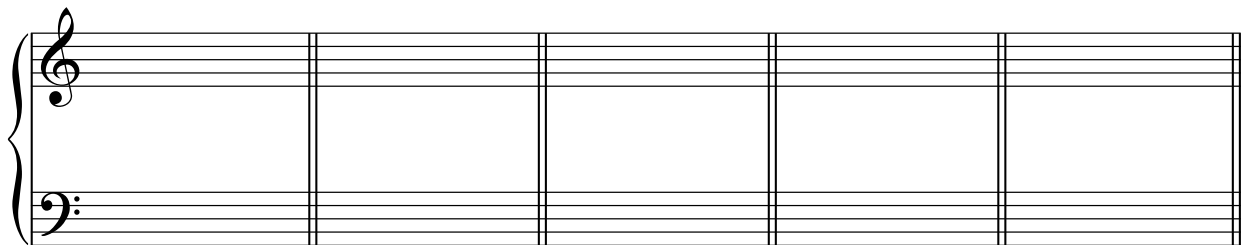
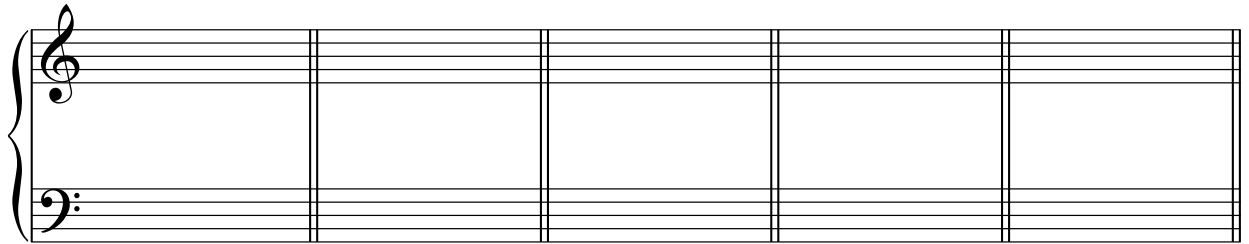
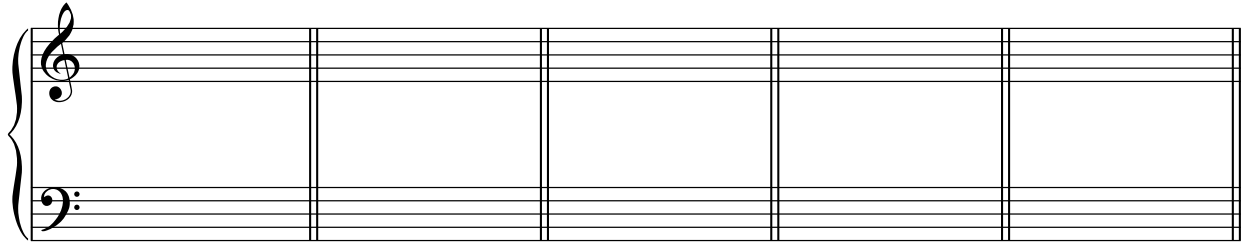
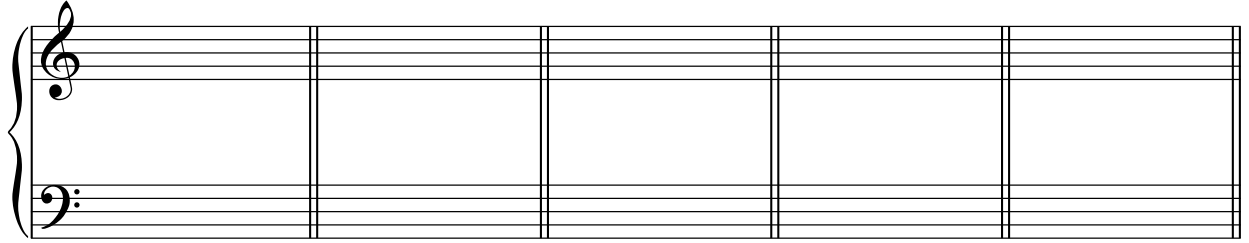
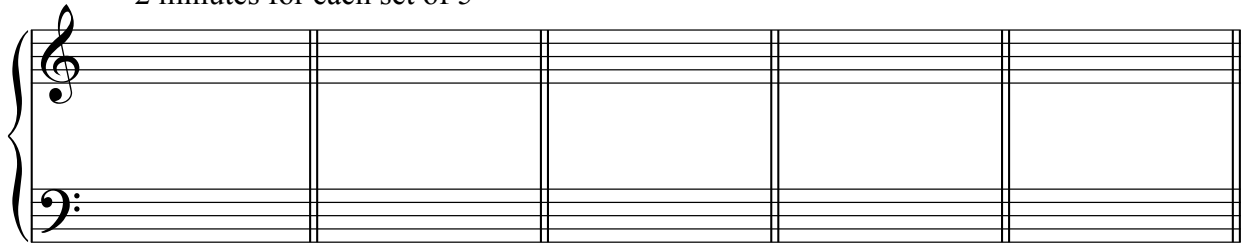




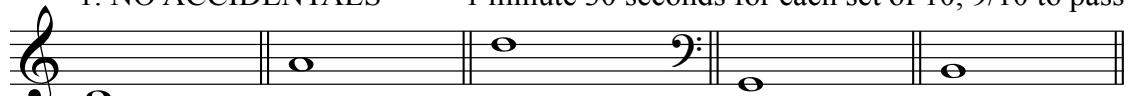




2 minutes for each set of 5



1. NO ACCIDENTALS 1 minute 30 seconds for each set of 10; 9/10 to pass



6th above 4th below 7th below 5th above 4th above

6 2. SECONDS AND THIRDS



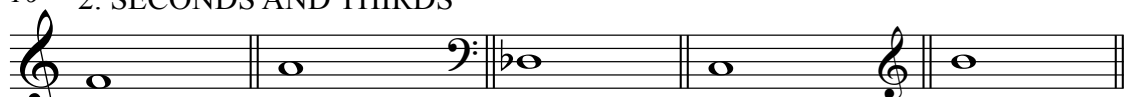
m2 above M3 above M2 below m3 below A2 above

11 1. NO ACCIDENTALS




5th below 4th above 7th above 5th above 6th below

16 2. SECONDS AND THIRDS



M2 above A2 below A3 above m3 above m2 below

21 1. NO ACCIDENTALS



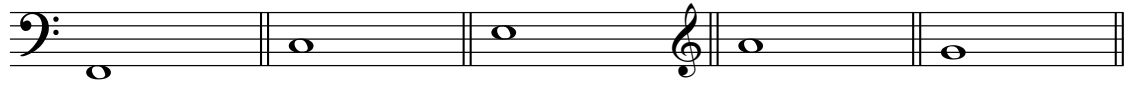
5th below 4th above 7th above 6th below 5th above

26 2. SECONDS AND THIRDS




M2 below d3 below M3 above m2 below A2 below

31 1. NO ACCIDENTALS



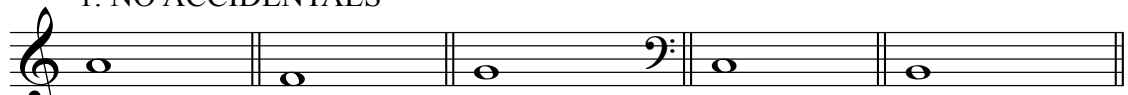
4th above 6th below 7th below 5th below 6th above

36 2. SECONDS AND THIRDS



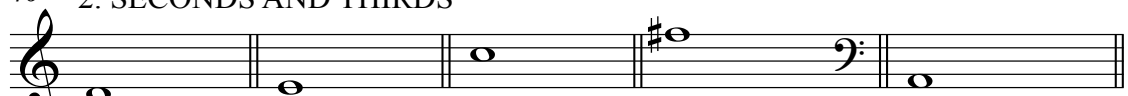
M2 below m3 below M3 below A2 above M3 above

41 1. NO ACCIDENTALS



5th below 6th above 7th above 4th below 4th above

46 2. SECONDS AND THIRDS



A3 above M3 below A2 above M2 below M3 above

51 1. NO ACCIDENTALS 1 minute 30 seconds for each set of 10; 9/10 to pass

7th above 5th below 4th above 6th below 5th above

56 2. SECONDS AND THIRDS

M2 above A3 below M3 above m2 below m3 below

61 1. NO ACCIDENTALS

6th above 4th below 7th below 5th above 4th above

66 2. SECONDS AND THIRDS

m2 above M3 above M2 below m3 below A2 above

71 1. NO ACCIDENTALS

5th below 4th above 7th above 5th above 6th below

76 2. SECONDS AND THIRDS

M2 above A2 below A3 above m3 above m2 below

81 1. NO ACCIDENTALS

5th below 4th above 7th above 6th below 5th above

86 2. SECONDS AND THIRDS

M2 below d3 below M3 above m2 below A2 below


91 1. NO ACCIDENTALS

7th above 5th below 4th above 6th below 5th above

96 2. SECONDS AND THIRDS

M2 above A3 below M3 above m2 below m3 below


101 1. NO ACCIDENTALS 1 minute 30 seconds for each set of 10; 9/10 to pass



6th above 4th below 7th below 5th above 4th above

Detailed description: This exercise consists of five measures of music. The first measure is in treble clef with a whole note on G4 (labeled '6th above'). The second measure is in bass clef with a whole note on D3 (labeled '4th below'). The third measure is in treble clef with a whole note on B3 (labeled '7th below'). The fourth measure is in treble clef with a whole note on E4 (labeled '5th above'). The fifth measure is in treble clef with a whole note on D4 (labeled '4th above').

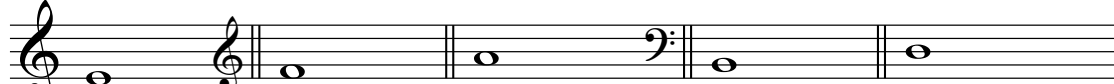
106 2. SECONDS AND THIRDS



m2 above M3 above M2 below m3 below A2 above

Detailed description: This exercise consists of five measures of music. The first measure is in treble clef with a whole note on G4 (labeled 'm2 above'). The second measure is in treble clef with a whole note on A4 (labeled 'M3 above'). The third measure is in bass clef with a whole note on F3 (labeled 'M2 below'). The fourth measure is in treble clef with a whole note on G#4 (labeled 'm3 below'). The fifth measure is in treble clef with a whole note on A2 (labeled 'A2 above').

111 1. NO ACCIDENTALS



5th below 4th above 7th above 5th above 6th below

Detailed description: This exercise consists of five measures of music. The first measure is in treble clef with a whole note on C3 (labeled '5th below'). The second measure is in treble clef with a whole note on D4 (labeled '4th above'). The third measure is in treble clef with a whole note on E5 (labeled '7th above'). The fourth measure is in bass clef with a whole note on G4 (labeled '5th above'). The fifth measure is in treble clef with a whole note on F6 (labeled '6th below').

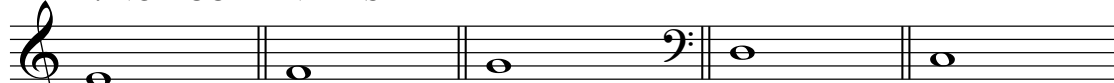
116 2. SECONDS AND THIRDS



M2 above A2 below A3 above m3 above m2 below

Detailed description: This exercise consists of five measures of music. The first measure is in treble clef with a whole note on G4 (labeled 'M2 above'). The second measure is in treble clef with a whole note on A2 (labeled 'A2 below'). The third measure is in bass clef with a whole note on A3 (labeled 'A3 above'). The fourth measure is in treble clef with a whole note on B3 (labeled 'm3 above'). The fifth measure is in treble clef with a whole note on G4 (labeled 'm2 below').

121 1. NO ACCIDENTALS



6th above 4th below 7th below 5th above 4th above

Detailed description: This exercise consists of five measures of music. The first measure is in treble clef with a whole note on G4 (labeled '6th above'). The second measure is in treble clef with a whole note on D3 (labeled '4th below'). The third measure is in treble clef with a whole note on B3 (labeled '7th below'). The fourth measure is in bass clef with a whole note on E4 (labeled '5th above'). The fifth measure is in treble clef with a whole note on D4 (labeled '4th above').


126 2. SECONDS AND THIRDS



m2 above M3 above M2 below m3 below A2 above

Detailed description: This exercise consists of five measures of music. The first measure is in treble clef with a whole note on G4 (labeled 'm2 above'). The second measure is in treble clef with a whole note on A4 (labeled 'M3 above'). The third measure is in bass clef with a whole note on F3 (labeled 'M2 below'). The fourth measure is in treble clef with a whole note on G#4 (labeled 'm3 below'). The fifth measure is in treble clef with a whole note on A2 (labeled 'A2 above').

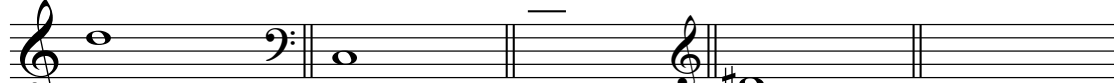
131 1. NO ACCIDENTALS



7th above 5th below 4th above 6th below 5th above

Detailed description: This exercise consists of five measures of music. The first measure is in treble clef with a whole note on C3 (labeled '7th above'). The second measure is in bass clef with a whole note on D3 (labeled '5th below'). The third measure is in treble clef with a whole note on E4 (labeled '4th above'). The fourth measure is in treble clef with a whole note on F6 (labeled '6th below'). The fifth measure is in bass clef with a whole note on G4 (labeled '5th above').


136 2. SECONDS AND THIRDS



M2 above A3 below M3 above m2 below m3 below

Detailed description: This exercise consists of five measures of music. The first measure is in treble clef with a whole note on G4 (labeled 'M2 above'). The second measure is in bass clef with a whole note on A3 (labeled 'A3 below'). The third measure is in treble clef with a whole note on B4 (labeled 'M3 above'). The fourth measure is in treble clef with a whole note on G#4 (labeled 'm2 below'). The fifth measure is in treble clef with a whole note on F6 (labeled 'm3 below').


141 1. NO ACCIDENTALS



5th below 4th above 7th above 6th below 5th above

Detailed description: This exercise consists of five measures of music. The first measure is in treble clef with a whole note on C3 (labeled '5th below'). The second measure is in bass clef with a whole note on D4 (labeled '4th above'). The third measure is in treble clef with a whole note on E5 (labeled '7th above'). The fourth measure is in treble clef with a whole note on F6 (labeled '6th below'). The fifth measure is in treble clef with a whole note on G4 (labeled '5th above').

146 2. SECONDS AND THIRDS



M2 below d3 below M3 above m2 below A2 below

Detailed description: This exercise consists of five measures of music. The first measure is in bass clef with a whole note on G2 (labeled 'M2 below'). The second measure is in treble clef with a whole note on D3 (labeled 'd3 below'). The third measure is in treble clef with a whole note on E4 (labeled 'M3 above'). The fourth measure is in treble clef with a whole note on G#4 (labeled 'm2 below'). The fifth measure is in treble clef with a whole note on A2 (labeled 'A2 below').

2 minutes 30 seconds for each set of 5; 4/5 to pass

1

2

3

4

5

6

7

8

9

10

11

12

13

14

15

NAME _____

First-Semester Mastery Examination - PRACTICE EXAM ONE
THEORY FUNDAMENTALS

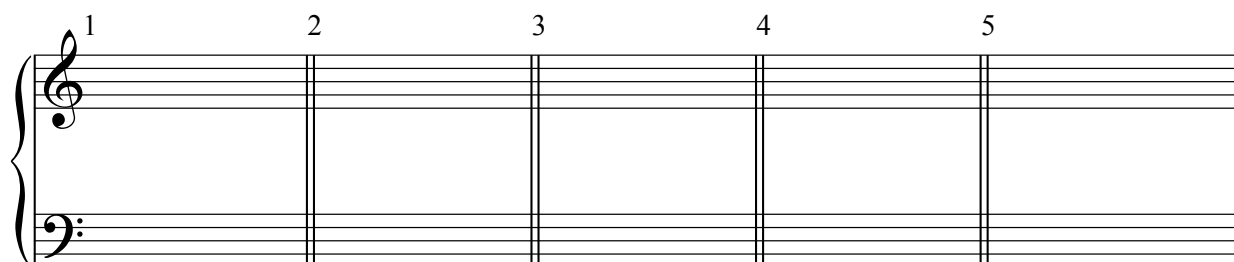
PART I: NOTE NAMES

1 2 3 4 5 6 7 8 9 10

11 12 13 14 15 16 17 18 19 20

NAME _____

PART II: KEY SIGNATURES



d minor

(d)

F# major

(F#)

A♭ minor

(a♭)

C# minor

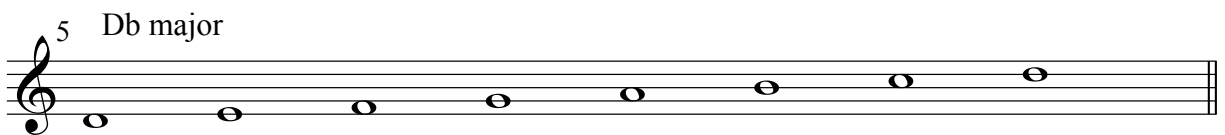
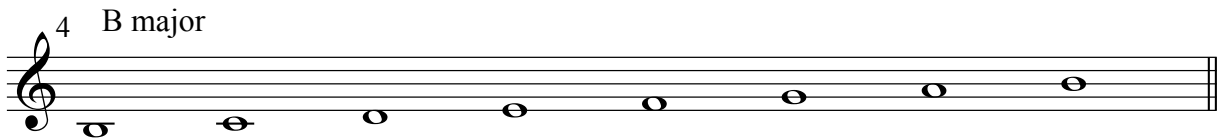
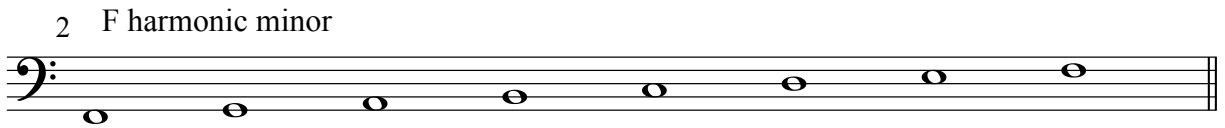
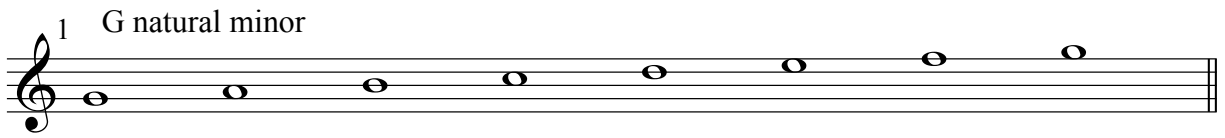
(c#)

E♭ major

(E♭)

NAME _____

PART III: SCALES (ADD ACCIDENTALS)



NAME _____

PART IV: RHYTHM AND METER

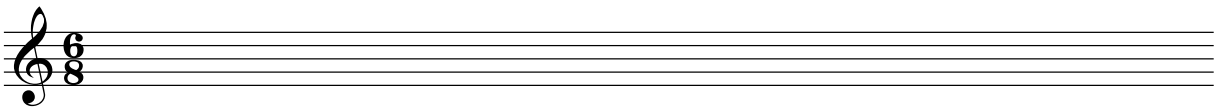
1. MEASURE COMPLETION (EIGHTHS AND SIXTEENTHS)



2. METER CLASSIFICATION

- a $\frac{12}{8}$ simple compound || duple triple quadruple
- b $\frac{4}{2}$ simple compound || duple triple quadruple
- c $\frac{3}{4}$ simple compound || duple triple quadruple

3. BARLINES AND BEAMING



NAME _____

PART V: INTERVAL NOTATION

1. NO ACCIDENTALS

1 2 3 4 5

5th below 4th above 7th above 6th below 5th above

Detailed description: This block contains five musical staves, each with a single half note. Staff 1 (bass clef) has a note on the 4th line (F4). Staff 2 (treble clef) has a note on the 4th space (F5). Staff 3 (bass clef) has a note on the 1st line (C4). Staff 4 (bass clef) has a note on the 2nd space (G4). Staff 5 (treble clef) has a note on the 4th space (F5). The intervals are labeled below each staff: '5th below' for the first, '4th above' for the second, '7th above' for the third, '6th below' for the fourth, and '5th above' for the fifth.

2. SECONDS AND THIRDS

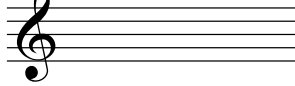
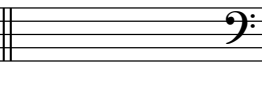
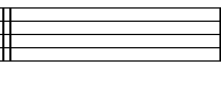
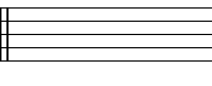
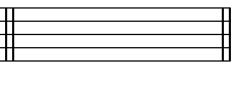
6 7 8 9 10

M2 below d3 below M3 above m2 below A2 below

Detailed description: This block contains five musical staves, each with a single half note. Staff 6 (treble clef) has a note on the 4th space (F5). Staff 7 (bass clef) has a note on the 1st line (C4). Staff 8 (treble clef) has a note on the 2nd line (D4) with a sharp sign. Staff 9 (bass clef) has a note on the 2nd space (G4). Staff 10 (treble clef) has a note on the 4th space (F5). The intervals are labeled below each staff: 'M2 below' for the first, 'd3 below' for the second, 'M3 above' for the third, 'm2 below' for the fourth, and 'A2 below' for the fifth.

NAME _____

PART VI: TRIADS (ROOT POSITION, CLOSE SPACING)

1	2	3	4	5
				
A minor	D \flat minor	B major	G \sharp minor	F major
(a)	(d \flat)	(B)	(g \sharp)	(F)

NAME _____

First-Semester Mastery Examination - PRACTICE EXAM TWO
THEORY FUNDAMENTALS

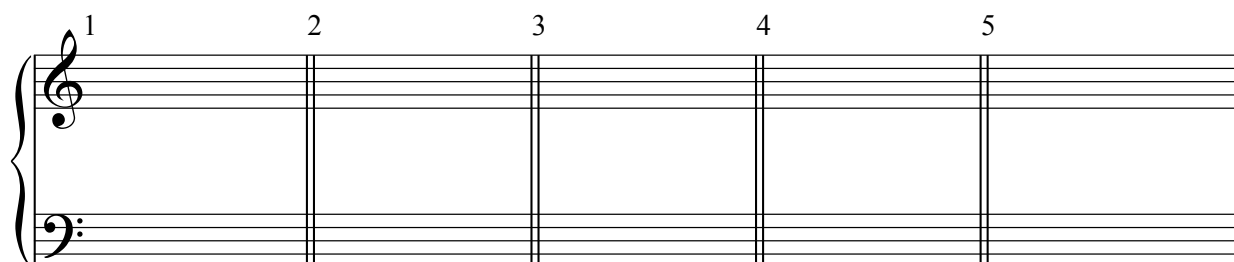
PART I: NOTE NAMES

1 2 3 4 5 6 7 8 9 10

11 12 13 14 15 16 17 18 19 20

NAME _____

PART II: KEY SIGNATURES



G# minor

(g#)

Bb major

(Bb)

E major

(E)

B minor

(b)

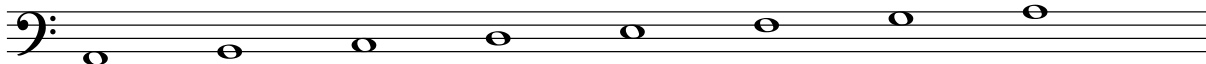
D# minor

(d#)

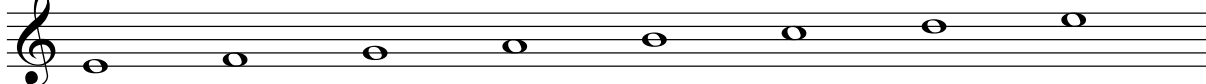
NAME _____

PART III: SCALES (ADD ACCIDENTALS)

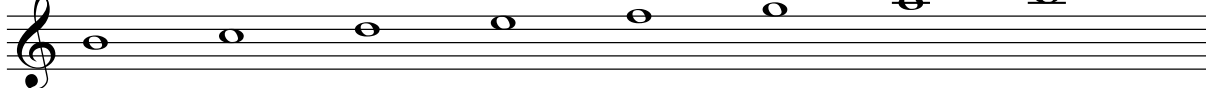
1 A harmonic minor



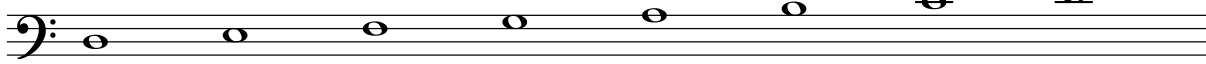
2 E major



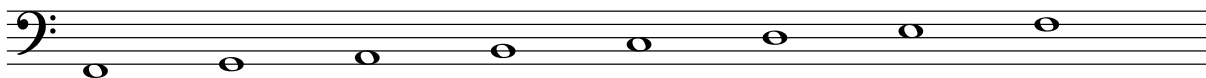
3 B \flat melodic minor



4 D melodic minor



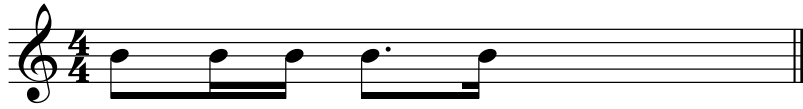
5 F major



NAME _____

PART IV: RHYTHM AND METER

1. MEASURE COMPLETION (EIGHTHS AND SIXTEENTHS)



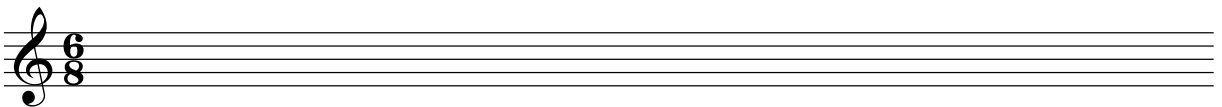
2. METER CLASSIFICATION

a $\frac{3}{16}$ simple compound || duple triple quadruple

b $\frac{6}{8}$ simple compound || duple triple quadruple

c $\frac{2}{4}$ simple compound || duple triple quadruple

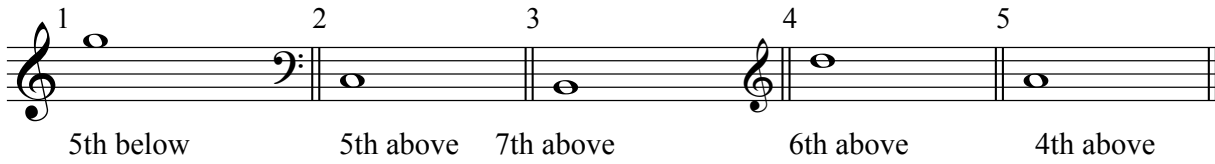
3. BARLINES AND BEAMING



NAME _____

PART V: INTERVAL NOTATION

1. NO ACCIDENTALS



1. NO ACCIDENTALS

1. 5th below (Treble clef, middle C)

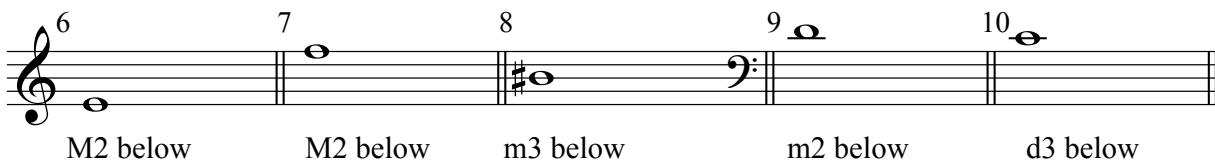
2. 5th above (Bass clef, middle C)

3. 7th above (Bass clef, middle C)

4. 6th above (Treble clef, middle C)

5. 4th above (Bass clef, middle C)

2. SECONDS AND THIRDS



2. SECONDS AND THIRDS

6. M2 below (Treble clef, middle C)

7. M2 below (Bass clef, middle C)

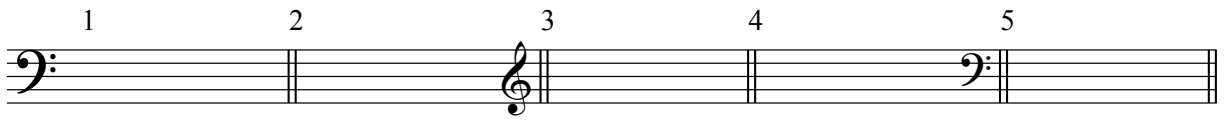
8. m3 below (Bass clef, middle C)

9. m2 below (Treble clef, middle C)

10. d3 below (Bass clef, middle C)

NAME _____

PART VI: TRIADS (ROOT POSITION, CLOSE SPACING)



C minor

B \flat major

A major

D \sharp minor

G minor

(c)

(B \flat)

(A)

(d \sharp)

(g)

NAME _____

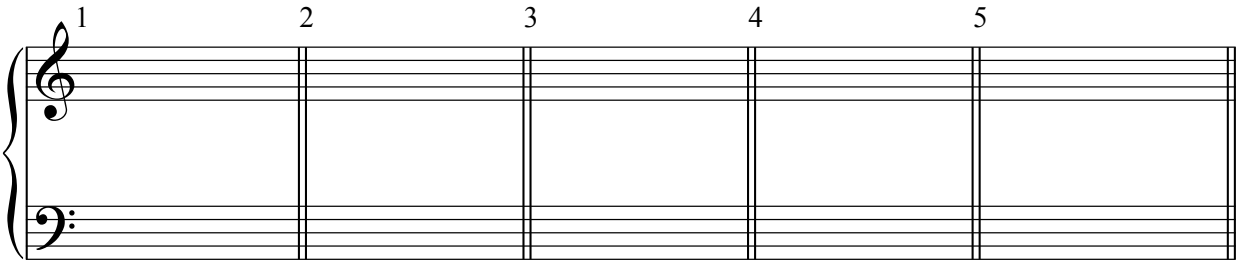
First-Semester Mastery Examination - PRACTICE EXAM THREE
THEORY FUNDAMENTALS

PART I: NOTE NAMES

Musical notation for the first 10 notes of the scale, numbered 1 through 10. The notes are: 1. C4 (treble clef, middle C), 2. D4, 3. E4, 4. F4 (sharped), 5. G4, 6. A4 (flat), 7. B4 (sharped), 8. C5 (flat), 9. D5 (sharped), 10. E5. The notes are written on a single staff with a treble clef. Bar lines separate the notes.

Musical notation for the bass line of 'The Rose Tree'. The staff is in bass clef. The notes are: 11 (G2), 12 (F2), 13 (E2), 14 (D2), 15 (C2), 16 (B1), 17 (A1), 18 (G1), 19 (F1), 20 (E1). There are triplets on notes 13 and 14. The key signature has one flat (Bb).

PART II: KEY SIGNATURES



A# minor

(a#)

D \flat major

(D \flat)

F major

(F)

F minor

(f)

D# minor

(d#)

PART III: SCALES (ADD ACCIDENTALS)

1 B harmonic minor



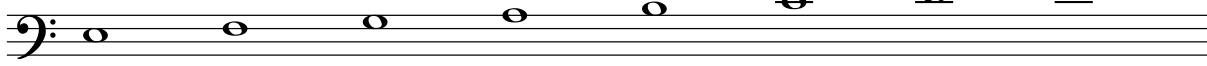
2 D \flat major



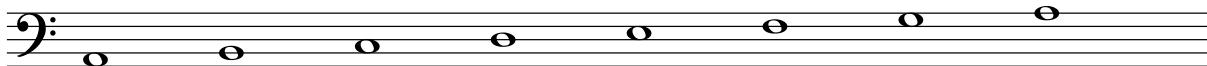
3 G \sharp melodic minor



4 E major



5 A \flat major



PART IV: RHYTHM AND METER

1. MEASURE COMPLETION (EIGHTHS AND SIXTEENTHS)



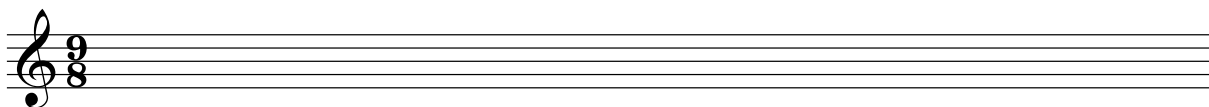
2. METER CLASSIFICATION

a $\frac{4}{16}$ simple compound || duple triple quadruple

b $\frac{12}{8}$ simple compound || duple triple quadruple

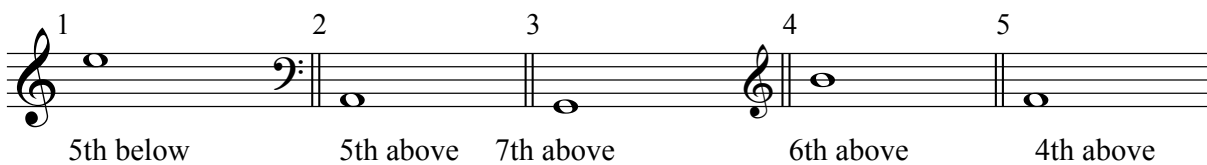
c $\frac{3}{4}$ simple compound || duple triple quadruple

3. BARLINES AND BEAMING



PART V: INTERVAL NOTATION

1. NO ACCIDENTALS



1 2 3 4 5

5th below 5th above 7th above 6th above 4th above

Detailed description: This block contains five musical staves, each with a single whole note. Staff 1 (treble clef) has a G4 note labeled '1' with '5th below' written below. Staff 2 (bass clef) has a C3 note labeled '2' with '5th above' written below. Staff 3 (bass clef) has a G2 note labeled '3' with '7th above' written below. Staff 4 (treble clef) has a D5 note labeled '4' with '6th above' written below. Staff 5 (bass clef) has a C4 note labeled '5' with '4th above' written below. Each staff is separated from the next by a double bar line.

2. SECONDS AND THIRDS



6 7 8 9 10

M2 below M2 below m3 below m2 below d3 below

Detailed description: This block contains five musical staves, each with a single whole note. Staff 6 (treble clef) has a G4 note labeled '6' with 'M2 below' written below. Staff 7 (bass clef) has a C4 note labeled '7' with 'M2 below' written below. Staff 8 (bass clef) has a C#3 note labeled '8' with 'm3 below' written below. Staff 9 (bass clef) has a B3 note labeled '9' with 'm2 below' written below. Staff 10 (bass clef) has a D3 note labeled '10' with 'd3 below' written below. Each staff is separated from the next by a double bar line.

PART VI: TRIADS (ROOT POSITION, CLOSE SPACING)

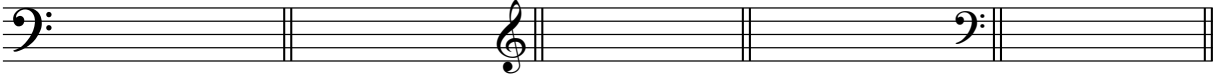
1

2

3

4

5



D minor	B major	A \flat major	E \sharp minor	A \sharp minor
(d)	(B)	(A \flat)	(e \sharp)	(a \sharp)

NAME _____

First-Semester Mastery Examination - PRACTICE EXAM FOUR
THEORY FUNDAMENTALS

PART I: NOTE NAMES

1 2 3 4 5 6 7 8 9 10

11 12 13 14 15 16 17 18 19 20

NAME _____

PART II: KEY SIGNATURES

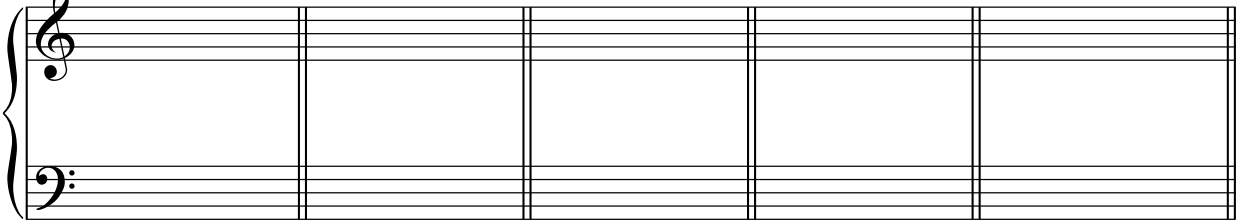
1

2

3

4

5



E♭ minor

(e♭)

C♭ major

(C♭)

B major

(B)

C minor

(c)

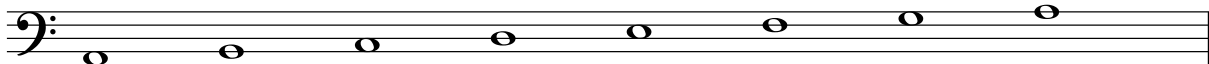
B minor

(b)

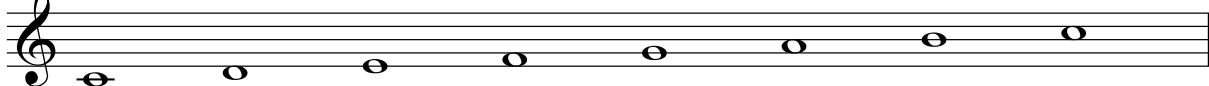
NAME _____

PART III: SCALES (ADD ACCIDENTALS)

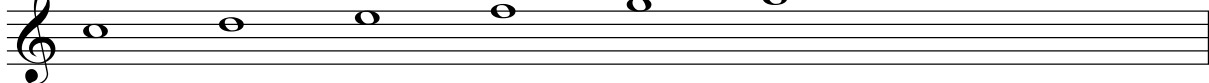
1 A \sharp harmonic minor



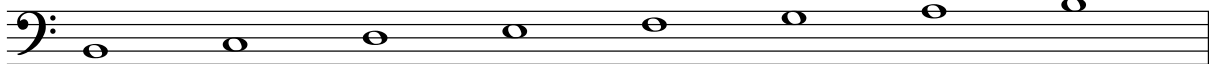
2 C \flat major



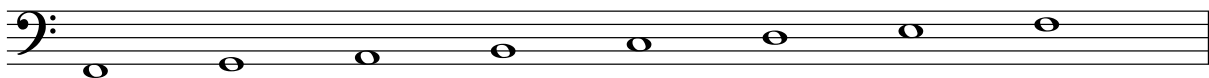
3 C \sharp melodic minor



4 B major



5 F major



NAME _____

PART IV: RHYTHM AND METER

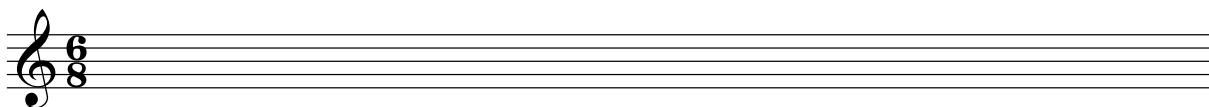
1. MEASURE COMPLETION (EIGHTHS AND SIXTEENTHS)



2. METER CLASSIFICATION

- a $\frac{4}{32}$ simple compound || duple triple quadruple
- b $\frac{9}{4}$ simple compound || duple triple quadruple
- c $\frac{2}{2}$ simple compound || duple triple quadruple

3. BARLINES AND BEAMING




NAME _____

PART V: INTERVAL NOTATION

1. NO ACCIDENTALS

1 2 3 4 5




5th below 5th above 7th above 6th above 4th above

Detailed description: This block contains five musical staves, each with a single whole note. Staff 1 (treble clef) has a note on the first line (C4). Staff 2 (bass clef) has a note on the first line (G3). Staff 3 (bass clef) has a note on the second line (A3). Staff 4 (treble clef) has a note on the first space (F4). Staff 5 (treble clef) has a note on the second space (G4). The staves are separated by double bar lines.

2. SECONDS AND THIRDS

6 7 8 9 10



M2 below M2 below m3 above m2 above d3 below

Detailed description: This block contains five musical staves, each with a single whole note. Staff 6 (treble clef) has a note on the first space (F4) with a sharp sign. Staff 7 (bass clef) has a note on the first line (G3). Staff 8 (bass clef) has a note on the second line (A3). Staff 9 (bass clef) has a note on the first space (F4). Staff 10 (treble clef) has a note on the second space (G4). The staves are separated by double bar lines.

NAME _____

PART VI: TRIADS (ROOT POSITION, CLOSE SPACING)

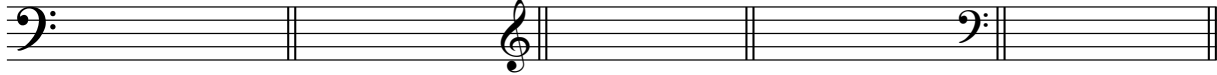
1

2

3

4

5



F minor	D# major	E♭ major	B♭ minor	D minor
(f)	(D#)	(E♭)	(b♭)	(d)

NAME _____

First-Semester Mastery Examination - PRACTICE EXAM FIVE
THEORY FUNDAMENTALS

PART I: NOTE NAMES

1 2 3 4 5 6 7 8 9 10

11 12 13 14 15 16 17 18 19 20

NAME _____

PART II: KEY SIGNATURES

1

2

3

4

5

B \flat minor

A major

B \flat major

C \sharp minor

A \sharp minor

(b \flat)

(A)

(B \flat)

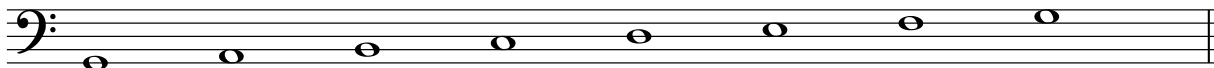
(c \sharp)

(a \sharp)

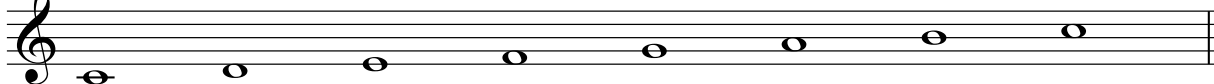
NAME _____

PART III: SCALES (ADD ACCIDENTALS)

1 G# harmonic minor



2 C# major



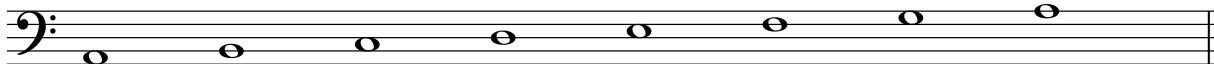
3 D melodic minor



4 F# major



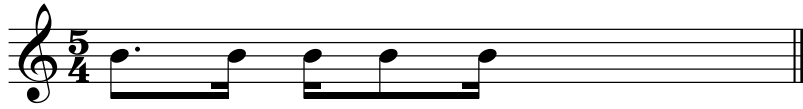
5 A♭ major



NAME _____

PART IV: RHYTHM AND METER

1. MEASURE COMPLETION (EIGHTHS AND SIXTEENTHS)



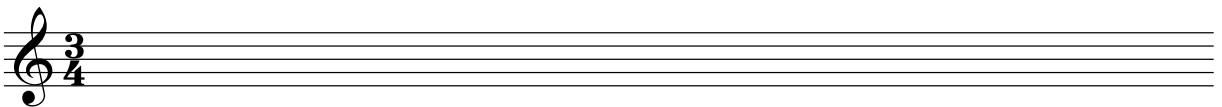
2. METER CLASSIFICATION

a $\frac{2}{8}$ simple compound || duple triple quadruple

b $\frac{12}{2}$ simple compound || duple triple quadruple

c $\frac{3}{2}$ simple compound || duple triple quadruple

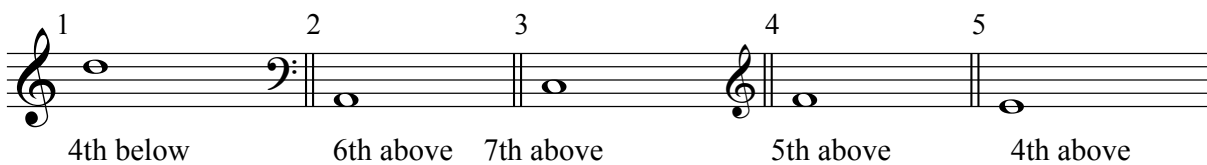
3. BARLINES AND BEAMING



NAME _____

PART V: INTERVAL NOTATION

1. NO ACCIDENTALS

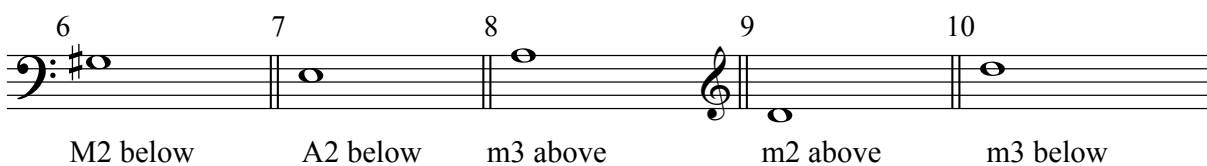


1 2 3 4 5

4th below 6th above 7th above 5th above 4th above

Detailed description: This block contains five musical staves, each with a single whole note. Staff 1 (treble clef) has a G4 note labeled '1' with '4th below' written below. Staff 2 (bass clef) has a C3 note labeled '2' with '6th above' written below. Staff 3 (bass clef) has a D3 note labeled '3' with '7th above' written below. Staff 4 (treble clef) has a G4 note labeled '4' with '5th above' written below. Staff 5 (bass clef) has a C3 note labeled '5' with '4th above' written below. Double bar lines separate the staves.

2. SECONDS AND THIRDS



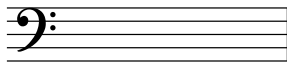
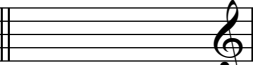
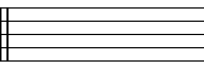
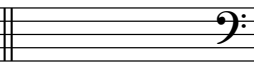
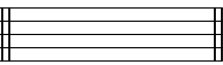
6 7 8 9 10

M2 below A2 below m3 above m2 above m3 below

Detailed description: This block contains five musical staves, each with a single whole note. Staff 6 (bass clef, key signature of one sharp) has a B2 note labeled '6' with 'M2 below' written below. Staff 7 (bass clef) has a C3 note labeled '7' with 'A2 below' written below. Staff 8 (bass clef) has a D3 note labeled '8' with 'm3 above' written below. Staff 9 (treble clef) has a G4 note labeled '9' with 'm2 above' written below. Staff 10 (bass clef) has a C3 note labeled '10' with 'm3 below' written below. Double bar lines separate the staves.

NAME _____

PART VI: TRIADS (ROOT POSITION, CLOSE SPACING)

1	2	3	4	5
				
F# minor	Db major	E major	B minor	D# minor
(f#)	(Db)	(E)	(b)	(d#)

NAME _____

First-Semester Mastery Examination - PRACTICE EXAM SIX
THEORY FUNDAMENTALS

PART I: NOTE NAMES

1 2 3 4 5 6 7 8 9 10

11 12 13 14 15 16 17 18 19 20

NAME _____

PART II: KEY SIGNATURES

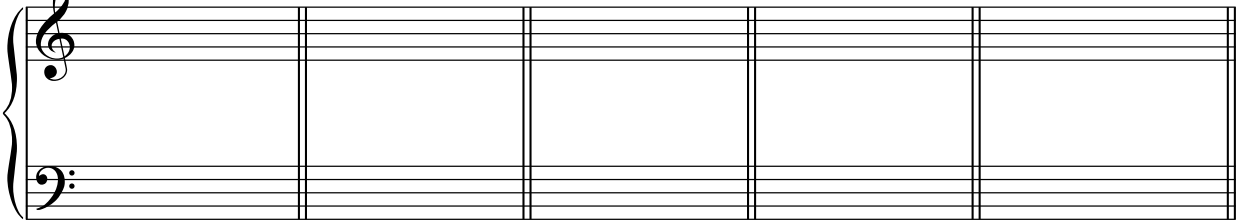
1

2

3

4

5



D# minor

F major

E major

E minor

F# minor

(d#)

(F)

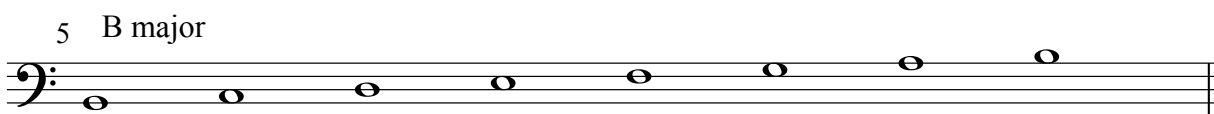
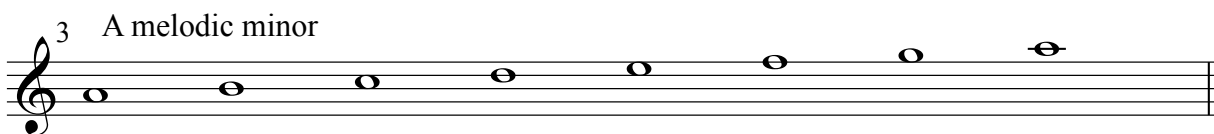
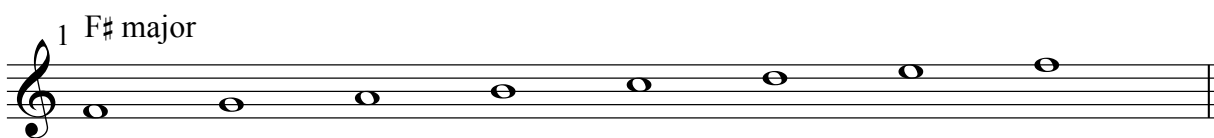
(E)

(e)

(F#)

NAME _____

PART III: SCALES (ADD ACCIDENTALS)



NAME _____

PART IV: RHYTHM AND METER

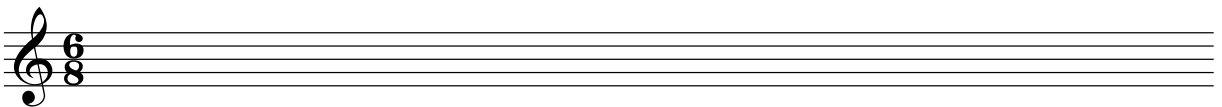
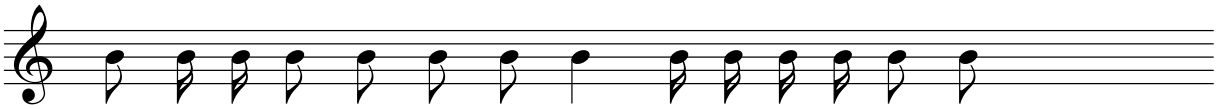
1. MEASURE COMPLETION (EIGHTHS AND SIXTEENTHS)



2. METER CLASSIFICATION

- a $\frac{9}{16}$ simple compound || duple triple quadruple
- b $\frac{2}{4}$ simple compound || duple triple quadruple
- c $\frac{3}{16}$ simple compound || duple triple quadruple

3. BARLINES AND BEAMING



NAME _____

PART V: INTERVAL NOTATION

1. NO ACCIDENTALS

Exercise 1 consists of five staves, each showing a single note relative to a central C4 (middle C). The staves are numbered 1 through 5. Staff 1: Treble clef, C4 (middle C). Staff 2: Bass clef, G2 (below staff). Staff 3: Treble clef, E4 (below staff). Staff 4: Treble clef, A4 (below staff). Staff 5: Bass clef, F3 (below staff).

1 2 3 4 5

6th below 7th above 4th above 7th below 6th above

2. SECONDS AND THIRDS

Exercise 2 consists of five staves, each showing a single note relative to a central C4 (middle C). The staves are numbered 6 through 10. Staff 6: Treble clef, B3 (below staff). Staff 7: Bass clef, D4 (below staff). Staff 8: Bass clef, C4 (middle C). Staff 9: Treble clef, D4 (below staff). Staff 10: Bass clef, E3 (below staff).

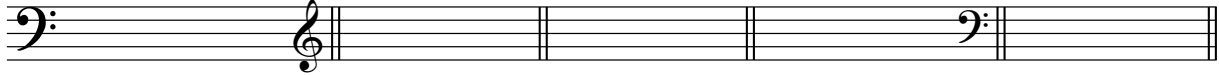
6 7 8 9 10

m2 below M2 above A3 above m2 above d3 below

NAME _____

PART VI: TRIADS (ROOT POSITION, CLOSE SPACING)

1 2 3 4 5



B minor	A major	C \flat major	G minor	F minor
(b)	(A)	(C \flat)	(g)	(f)