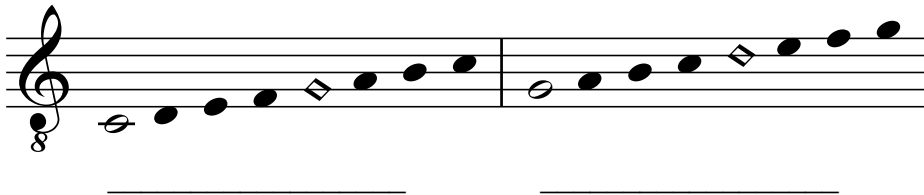
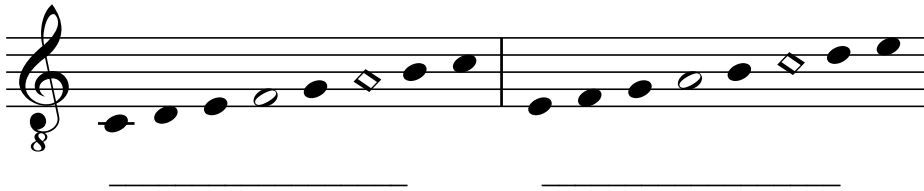
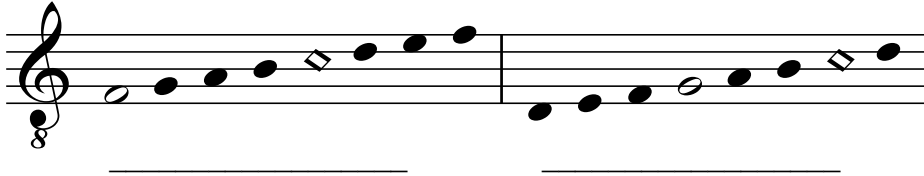


Medieval Modes Quiz

Name: _____

Date: _____

1. Identify the following modes. The finalis is shown as an open notehead, and the reciting tone is shown as a square notehead. **10 points each.**



2. The range of a particular chant or mode is known as its _____. **5 points.**

3. Which dorian mode uses 2 flats? _____ **5 points.**

4. Notate the following modes. You may use key signatures or accidentals. **15 points each.**

