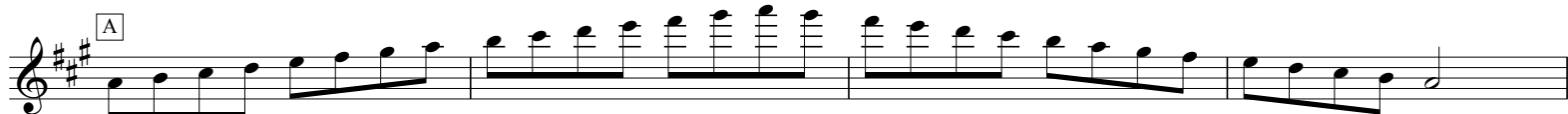


Major Scales

Flute (Range: C4-C7)

Sheet music for six major scales for Flute (Range: C4-C7), arranged in 4/4 time. Each scale is presented on a single staff with a key signature box indicating the starting note.

- C Major:** Scale starting on C4, ascending and descending.
- F Major:** Scale starting on F4, ascending and descending.
- Bb Major:** Scale starting on Bb4, ascending and descending.
- Eb Major:** Scale starting on Eb4, ascending and descending.
- Ab Major:** Scale starting on Ab4, ascending and descending.
- C# Major:** Scale starting on C#4, ascending and descending.



Natural Minor Scales

Flute (Range: C4-C7)

Sheet music for six natural minor scales for Flute (Range: C4-C7). Each scale is written on a single staff in treble clef, starting with a key signature box indicating the starting note.

- C**: C4, D4, E4, F4, G4, A4, B4, C5, B4, A4, G4, F4, E4, D4, C4.
- F**: F4, G4, A4, Bb4, C5, Bb4, A4, G4, F4, E4, D4, C4, Bb3, A3, G3, F3.
- Bb**: Bb3, C4, D4, Eb4, F4, G4, Ab4, Bb4, C5, Bb4, Ab4, G4, F4, Eb4, D4, C4.
- Eb**: Eb3, F3, G3, Ab3, Bb3, C4, D4, Eb4, F4, G4, Ab4, Bb4, C5, Bb4, Ab4, G4, F4, Eb4, D4, C4.
- Ab**: Ab3, Bb3, C4, D4, Eb4, F4, G4, Ab4, Bb4, C5, Bb4, Ab4, G4, F4, Eb4, D4, C4, Bb3, Ab3.
- C#**: C#4, D#4, E#4, F#4, G#4, A#4, B#4, C5, B#4, A#4, G#4, F#4, E#4, D#4, C#4.

Sheet music for six guitar scales, each in a different key signature and starting on a specific fret. The scales are written in treble clef and consist of 12 measures each, with a double bar line at the end of the sixth measure.

- F# (F# major):** Treble clef, key signature of three sharps (F#, C#, G#). The scale starts on the 1st fret (F#).
- B (B major):** Treble clef, key signature of two sharps (F#, C#). The scale starts on the 2nd fret (B).
- E (E major):** Treble clef, key signature of one sharp (F#). The scale starts on the 4th fret (E).
- A (A major):** Treble clef, key signature of no sharps or flats. The scale starts on the 5th fret (A).
- D (D major):** Treble clef, key signature of two flats (Bb, Eb). The scale starts on the 7th fret (D).
- G (G major):** Treble clef, key signature of one flat (Bb). The scale starts on the 9th fret (G).