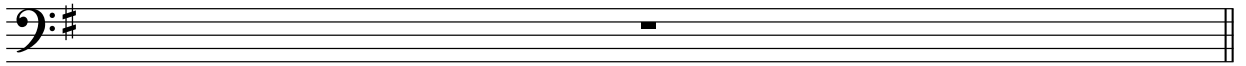


Violoncello



3 Duets

from Robert Schumann's

Album for the Young

Robert Schumann (1810-1856)

These duets are drawn from *Album for the Young*, Op. 68, composed in 1848 by Robert Schumann (1810-1856). Some pieces may be transposed; original keys are indicated before each duet. I have included tempo marks; these are only suggestions. All dynamics and crescendo/diminuendo marks are Schumann's. Please visit www.drfeezell.com for many more scores and music theory handouts.

Duets from Schumann's *Album for the Young*

1. Op. 68, No. 1: Melodie
Original key: Concert C major

Robert Schumann (1810-1856)
arr. Mark Feezell

$\text{♩} = 100$

Violin

Violoncello

p

p

4

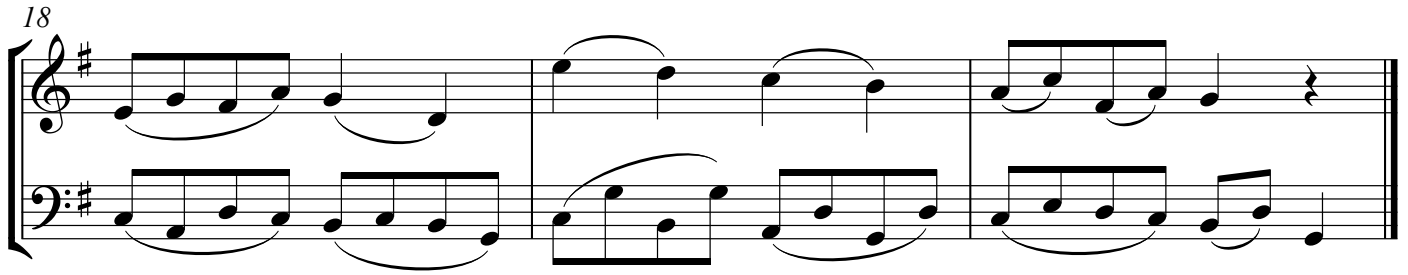
8

12

16

Op. 68, No. 1: Melodie, cont.

3



Duets from Schumann's *Album for the Young*

2. Op. 68, No. 3: Trällerliedchen

Original key: Concert C major

Robert Schumann (1810-1856)

arr. Mark Feezell

♩ = 100

Violin

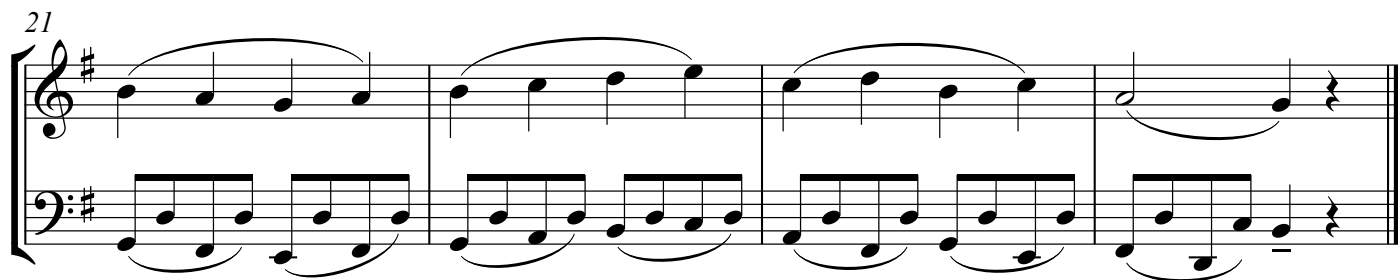
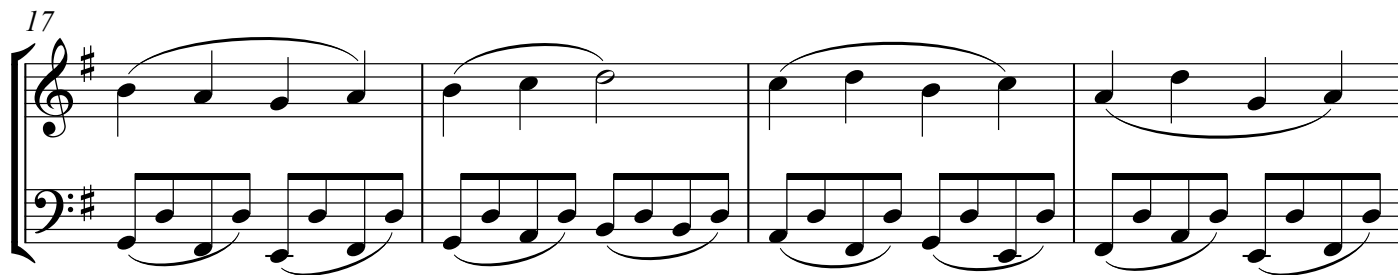
Violoncello

p

5

9

13



Duets from Schumann's *Album for the Young*

3. Op. 68, No. 5: Stückchen

Original key: Concert C major

Robert Schumann (1810-1856)

arr. Mark Feezell

$\text{♩} = 100$

Violin

p

Violoncello

p

4

9

13

17

21

The image displays a musical score for a piece titled "Op. 68, No. 5: Stückchen, cont." on page 7. The score is written for a piano, featuring a treble and bass staff joined by a brace. The key signature is one sharp (F#), and the time signature is 4/4. The score is divided into two systems. The first system, starting at measure 17, contains four measures. The second system, starting at measure 21, contains five measures and ends with a double bar line. The melody in the treble staff consists of quarter and eighth notes, often beamed together, with some measures containing slurs. The bass staff provides a steady accompaniment of eighth notes, with some measures featuring beamed eighth notes and a few accidentals (sharps).