

Major Scales

Bb Trumpet (C4-E5)

C



Musical staff for C major scale. The key signature is C major (no sharps or flats). The scale is written in 4/4 time, starting on C4 (middle C) and ascending to C5. The notes are: C4, D4, E4, F4, G4, A4, B4, C5. The scale is played in two directions: ascending and descending.

F



Musical staff for F major scale. The key signature is F major (one flat). The scale is written in 4/4 time, starting on F4 and ascending to F5. The notes are: F4, G4, A4, Bb4, C5, D5, E5, F5. The scale is played in two directions: ascending and descending.

Bb



Musical staff for Bb major scale. The key signature is Bb major (two flats). The scale is written in 4/4 time, starting on Bb4 and ascending to Bb5. The notes are: Bb4, C5, D5, Eb5, F5, G5, Ab5, Bb5. The scale is played in two directions: ascending and descending.

Eb



Musical staff for Eb major scale. The key signature is Eb major (three flats). The scale is written in 4/4 time, starting on Eb4 and ascending to Eb5. The notes are: Eb4, F4, G4, Ab4, Bb4, C5, D5, Eb5. The scale is played in two directions: ascending and descending.

Ab



Musical staff for Ab major scale. The key signature is Ab major (four flats). The scale is written in 4/4 time, starting on Ab4 and ascending to Ab5. The notes are: Ab4, Bb4, C5, D5, Eb5, F5, G5, Ab5. The scale is played in two directions: ascending and descending.

C#



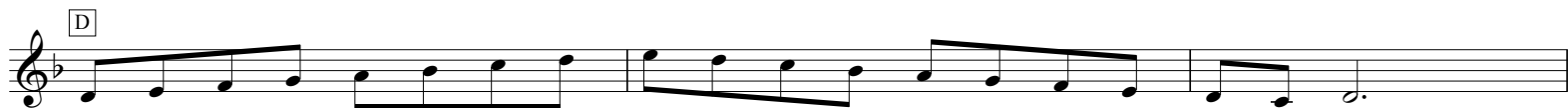
Musical staff for C# major scale. The key signature is C# major (seven sharps). The scale is written in 4/4 time, starting on C#4 and ascending to C#5. The notes are: C#4, D#4, E#4, F#4, G#4, A#4, B#4, C#5. The scale is played in two directions: ascending and descending.



Natural Minor Scales

Bb Trumpet (C4-E5)





Harmonic Minor Scales

Bb Trumpet (C4-E5)

C

F

Bb

Eb

Ab

C#



Melodic Minor Scales

Bb Trumpet (C4-E5)



