

Major Scales

Tuba (F1-A3)

Sheet music for six major scales for Tuba (F1-A3), written in bass clef with a 4/4 time signature. The scales are: C, F, Bb, Eb, Ab, and C#.

The scales are written in bass clef with a 4/4 time signature. Each scale is presented in four measures: ascending eighth notes, descending eighth notes, ascending quarter notes, and descending quarter notes. The final measure of each staff is a whole note chord of the scale's tonic.

- C
- F
- Bb
- Eb
- Ab
- C#



Natural Minor Scales

Tuba (F1-A3)

Sheet music for Natural Minor Scales for Tuba (F1-A3), showing six scales: C, F, Bb, Eb, Ab, and C#.

The scales are written in bass clef with the following key signatures:

- C: C major (no sharps or flats)
- F: F major (one flat: Bb)
- Bb: Bb major (two flats: Bb, Eb)
- Eb: Eb major (three flats: Bb, Eb, Ab)
- Ab: Ab major (four flats: Bb, Eb, Ab, Db)
- C#: C# major (three sharps: F#, C#, G#)





Harmonic Minor Scales

Tuba (F1-A3)

[C]

[F]

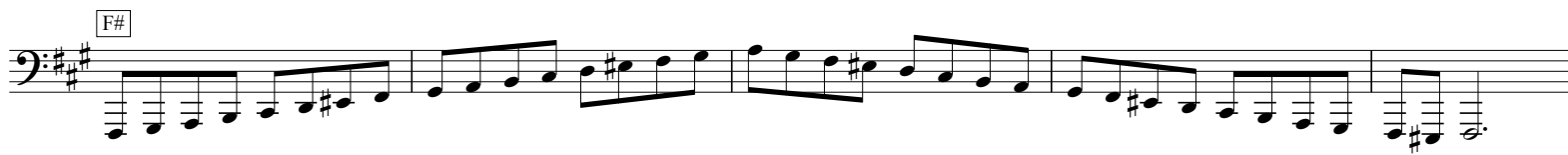
[Bb]

[Eb]

[Ab]

[C#]

The image displays six musical staves, each representing a different harmonic minor scale for the tuba. Each staff begins with a key signature box indicating the scale's starting note and key signature. The scales are: C (one flat), F (two flats), Bb (three flats), Eb (three flats and one sharp), Ab (four flats), and C# (three sharps). Each staff contains four measures of music. The first measure shows the ascending scale, the second shows the descending scale, the third shows the ascending scale with a natural sign on the seventh degree, and the fourth shows the descending scale with a natural sign on the seventh degree. The notes are written in a bass clef.



Melodic Minor Scales

Tuba (F1-A3)

[C]

[F]

[Bb]

[Eb]

[Ab]

[C#]

The image displays six musical staves, each representing a different melodic minor scale for the tuba. Each staff begins with a key signature box indicating the scale's starting note and quality: C, F, Bb, Eb, Ab, and C#. The scales are written in bass clef with a key signature of three flats (Bb, Eb, Ab). The scales are: C (C, D, Eb, F, G, Ab, Bb), F (F, G, Ab, Bb, C, D, Eb), Bb (Bb, C, D, Eb, F, G, Ab), Eb (Eb, F, G, Ab, Bb, C, D), Ab (Ab, Bb, C, D, Eb, F, G), and C# (C#, D, Eb, F, G, Ab, Bb). Each staff contains four measures of music, showing the scale's progression and ending with a whole note on the final scale degree.

