

3 Duets

from Robert Schumann's

Album for the Young

Robert Schumann (1810-1856)

These duets are drawn from *Album for the Young*, Op. 68, composed in 1848 by Robert Schumann (1810-1856). Some pieces may be transposed; original keys are indicated before each duet. I have included tempo marks; these are only suggestions. All dynamics and crescendo/diminuendo marks are Schumann's. Please visit www.drfeezell.com for many more scores and music theory handouts.

Duets from Schumann's *Album for the Young*

1. Op. 68, No. 1: Melodie
Original key: Concert C major

Robert Schumann (1810-1856)
arr. Mark Feezell

$\text{♩} = 100$

Cello

p

Cello

p

5

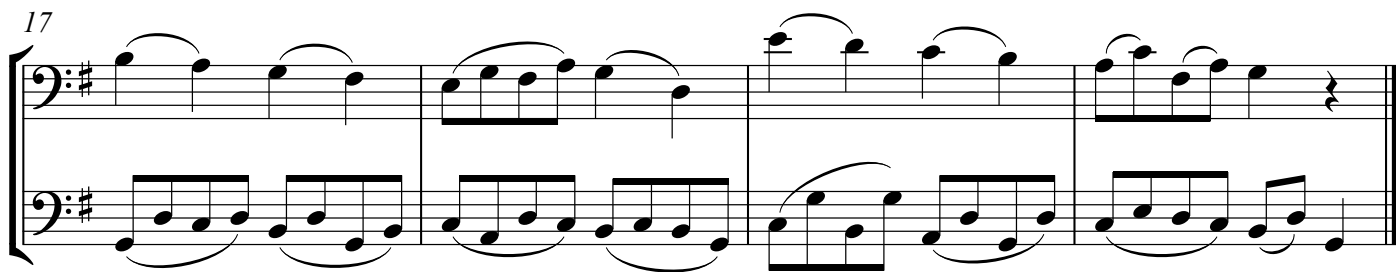
< >

9

13

< >

Op. 68, No. 1: Melodie, cont.



Duets from Schumann's *Album for the Young*

2. Op. 68, No. 3: Trällerliedchen

Original key: Concert C major

Robert Schumann (1810-1856)

arr. Mark Feezell

$\text{♩} = 100$

Cello

p

Cello

p

5

9

13

Op. 68, No. 3: Trällerliedchen, cont.

17

21

Duets from Schumann's *Album for the Young*

3. Op. 68, No. 5: Stückchen

Original key: Concert C major

Robert Schumann (1810-1856)

arr. Mark Feezell

♩ = 100

Cello

p

Cello

p

4

9

13

Op. 68, No. 5: Stückchen, cont.

The image displays two systems of musical notation for a piece in G major, Op. 68, No. 5. The first system covers measures 17 through 20, and the second system covers measures 21 through 24. Each system consists of a grand staff with a treble and bass clef. The treble staff features a melody of eighth notes with slurs, while the bass staff provides a rhythmic accompaniment of eighth-note pairs. The key signature is one sharp (F#). The piece concludes with a double bar line at the end of measure 24.