

3 Duets

from Robert Schumann's

Album for the Young

Robert Schumann (1810-1856)

These duets are drawn from *Album for the Young*, Op. 68, composed in 1848 by Robert Schumann (1810-1856). Some pieces may be transposed; original keys are indicated before each duet. I have included tempo marks; these are only suggestions. All dynamics and crescendo/diminuendo marks are Schumann's. Please visit www.drfeezell.com for many more scores and music theory handouts.

Duets from Schumann's *Album for the Young*

1. Op. 68, No. 1: Melodie

Original key: Concert C major

Robert Schumann (1810-1856)

arr. Mark Feezell

$\text{♩} = 100$

Trombone

p

Trombone

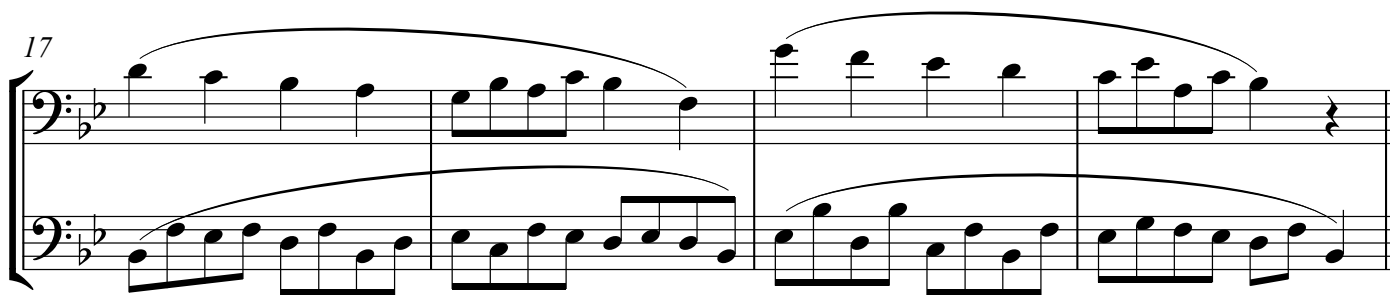
p

5

9

13

Op. 68, No. 1: Melodie, cont.



Duets from Schumann's *Album for the Young*

2. Op. 68, No. 3: Trällerliedchen

Original key: Concert C major

Robert Schumann (1810-1856)

arr. Mark Feezell

♩ = 100

Trombone

Trombone

p

p

5

9

13

Op. 68, No. 3: Trällerliedchen, cont.

17

21

Duets from Schumann's *Album for the Young*

3. Op. 68, No. 5: Stückchen

Original key: Concert C major

Robert Schumann (1810-1856)

arr. Mark Feezell

♩ = 100

Trombone

p

Trombone

p

4

9

13

Op. 68, No. 5: Stückchen, cont.

The image displays a musical score for a piece titled "Op. 68, No. 5: Stückchen, cont." The score is written for two staves, likely representing the left and right hands of a piano. The key signature is one flat (B-flat), and the time signature is 4/4. The score is divided into two systems. The first system begins at measure 18, marked with a "18" above the staff. It features a melody in the upper staff and a bass line in the lower staff. The melody consists of a series of eighth notes, with a slur over the first two measures. The bass line consists of a series of eighth notes, with a slur over the first two measures. The second system begins at measure 21, marked with a "21" above the staff. It continues the melody and bass line from the first system. The melody in the upper staff consists of a series of eighth notes, with a slur over the first two measures. The bass line in the lower staff consists of a series of eighth notes, with a slur over the first two measures. The score ends with a double bar line at the end of measure 21.