

Major Scales

Viola (C3-C6)





Natural Minor Scales

Viola (C3-C6)



Harmonic Minor Scales

Viola (C3-C6)

Sheet music for six Harmonic Minor Scales for Viola (C3-C6), arranged in two systems of three staves each. Each staff begins with a key signature box indicating the scale's starting note and key signature.

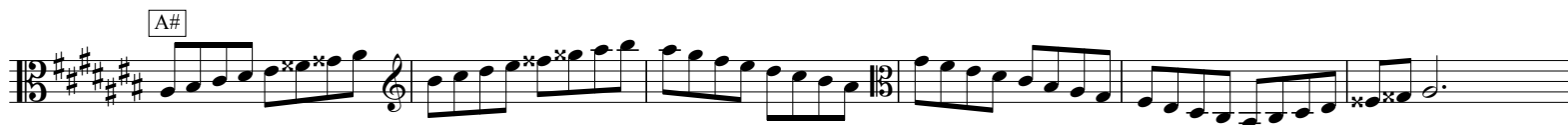
The scales are:

- C** (C3-C6): C major scale, starting on C3, ending on C6.
- F** (F3-F6): F major scale, starting on F3, ending on F6.
- A#** (A#3-A#6): A# minor scale, starting on A#3, ending on A#6.
- D#** (D#3-D#6): D# minor scale, starting on D#3, ending on D#6.
- G#** (G#3-G#6): G# minor scale, starting on G#3, ending on G#6.
- C#** (C#3-C#6): C# minor scale, starting on C#3, ending on C#6.



Melodic Minor Scales

Viola (C3-C6)



The image displays six musical staves, each representing a different scale pattern. Each staff begins with a key signature change to F# (indicated by two sharps) and a 12/8 time signature. The scales are labeled with letters in boxes above the first measure: F#, B, E, A, D, and G. The notation includes various note values (quarter, eighth, and sixteenth notes) and rests, with some measures containing triplets. The scales are written in a continuous line across the staves, with some measures ending in a double bar line.