

3 Duets from J.S. Bach's English Suites Johann Sebastian Bach (1685-1750)

These duets are drawn from the English suites of Johann Sebastian Bach (1685-1750). Bach wrote the English suites (BWV 806-811) after 1715. Some pieces may be transposed; original keys are indicated before each piece. I have included tempi and initial dynamics these are only suggestions.

In order to maintain a "cleaner" appearance, I have included the original ornament symbols, rather than writing out the ornaments. A number of websites include descriptions of Baroque ornaments.

These pieces are *not* intended to function as a single composition, as the original tonal relationships of the suites have been removed. I suggest that they be enjoyed as individual movements.

3 Duets from Bach's English Suites

1

English Suite I, Bourrée II

Original key: Concert a minor

Johann Sebastian Bach (1685-1750)

arr. Mark Feezell

$\text{♩} = 68$

Bassoon

Bassoon

mp

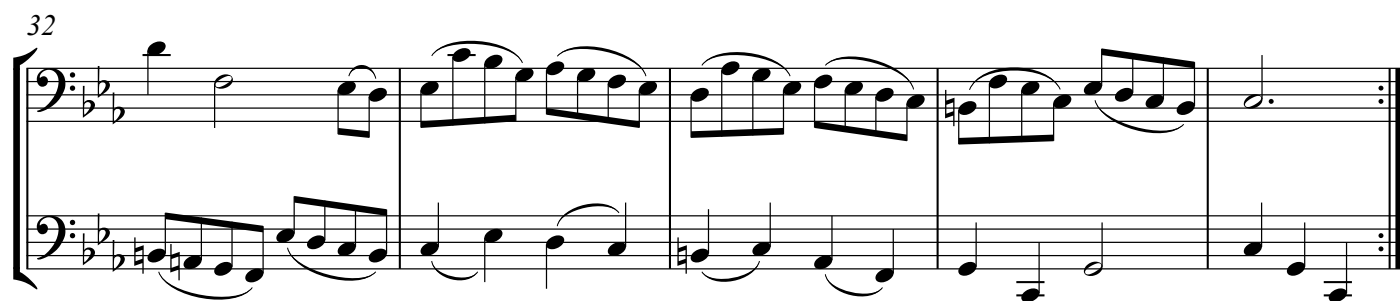
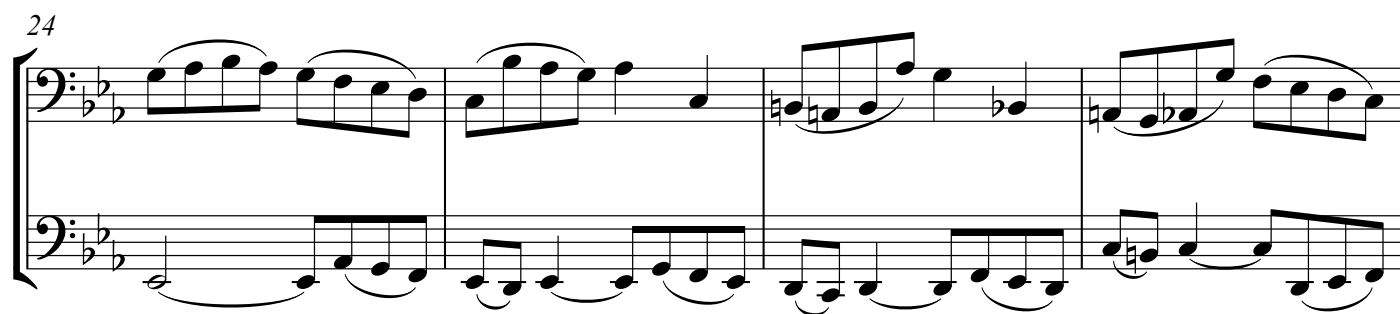
mp

4

8

12

16



3 Duets from Bach's English Suites

English Suite II, Gigue
Original key: Concert a minor

Johann Sebastian Bach (1685-1750)
arr. Mark Feezell

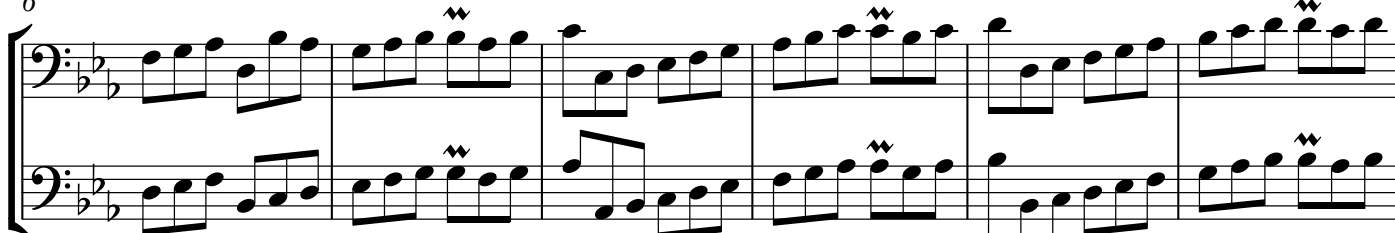
$\text{♩} = 110$ 

Bassoon *mf*

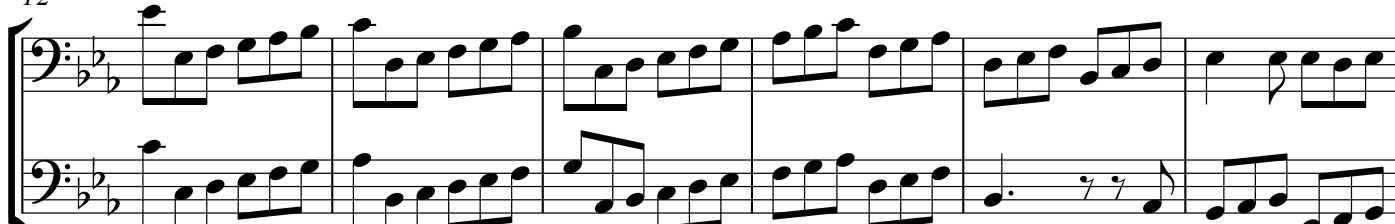
Bassoon *mf*



6



12



18



24



30

1. 2.

36

42

47

52

57

62


67

73

To coda 1.

76

2. D. S. al coda (no repeats)

 Coda

3 Duets from Bach's English Suites

English Suite VI, Gavotte II

Original key: Concert D Major

Johann Sebastian Bach (1685-1750)

arr. Mark Feezell

$\text{♩} = 64$

Bassoon

Bassoon

f

f

4

8

1. 2.

(*w*)

12

16

(*w*)

